

Band and Buckle Systems

- High strength fastening and clamping.
- Wide variety of materials, widths and thicknesses.
- Can be formed to virtually any diameter and shape.



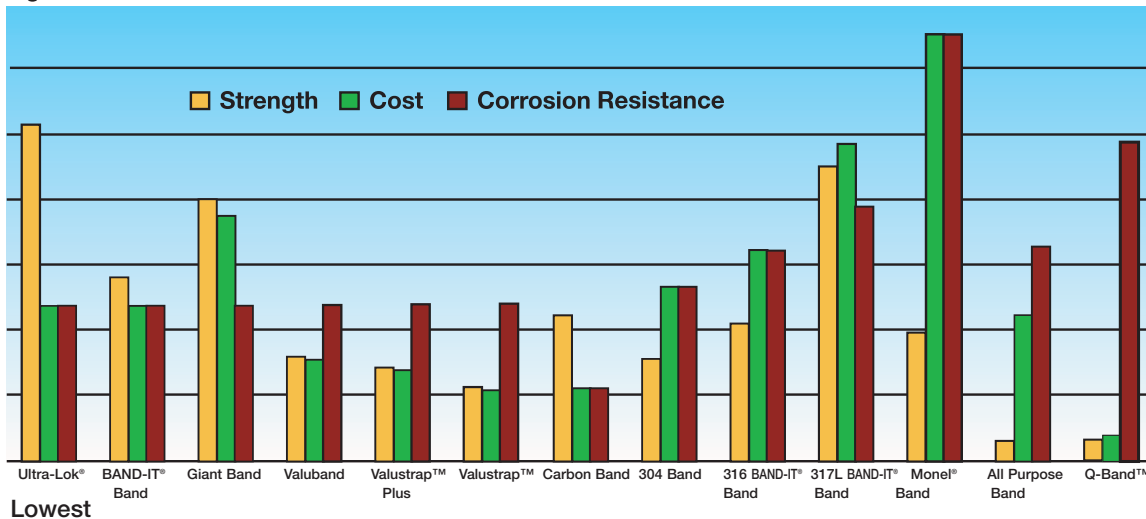
BAND-IT® Band



Ultra-Lok® Tote

Highest

Band Comparison Chart



Lowest

NOTE: Comparisons for Strength and Cost are based on similar widths and thicknesses
This chart is for illustrative purposes only.

Ultra-Lok® Systems

- Apply four times faster than band and buckle with hand tools!
- Form band lock under full tension, meaning less slippage.
- Correct assembly guided by matching arrow indicators on band and buckle.
- Offers good resistance to oxidation and many moderate corrosive agents.
- 201 1/4 hard SS band provides greater material strength allowing tighter clamps and can be double wrapped for additional strength.
- 3/4" band available in plastic tote with buckle storage area, 1/2" band available in cardboard boxes.
- Application Tools: UL4000 Ultra-Lok® rechargeable portable tool and UL9010 Ultra-Lok® 110-volt AC, corded electric tool.



UL4000 Tool with Ultra-Lok® Band & Buckle

BAND-FAST™

- Ready to Use.
- Pre-cut and pre-assembled with a clip, buckle or seal.
- Saves up to 30% time and labor costs for large projects.
- Reduce material costs and scrap with pre-cut band lengths.
- Available in standard and custom sizes and materials.
- Now available with COLOR-IT™.
- Application Tools: C00169, C00369, C07569, and C40099.

COLOR-IT™

- Available in a variety of types and colors.
- Superior performance, UV resistance, and durability.



BAND-IT can match any color. Call for quote.



BAND-FAST™

MOST POPULAR



GENERAL USE

BAND-IT® Band

- 201 SS, bright annealed finish sets the standard with a combination of high strength and quality appearance.
- Offers good resistance to oxidation and many moderate corrosive agents.
- EASY SCALE - Patented imprint on the band to quickly determine band length without waste.
- Durable plastic tote dispensers available.
- Application Tools: C00169, C00369, C07569, C08569, and C40099.



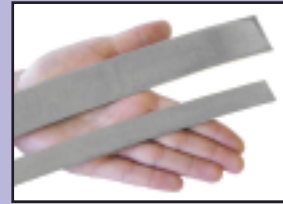
BAND-IT® Tote



BAND-IT® EASY SCALE

Giant Band

- The widest and thickest band provides maximum strength.
- Available in 201 SS bright or matte finish.
- Application Tools: C00369 for 3/4" band only and G40269.



Giant Band

VALU-STRAP™, VALU-STRAP Plus™, and Valuband

- Economical band suitable for light duty applications.
- Thickness: 0.015", 0.020", 0.025".
- May be 200 or 300 series SS, typically non-magnetic.
- Application Tools: C00169, C00369, C07569, C08569, and C40099.



VALU-STRAP™

Galvanized Carbon Steel Band

- Utilized mainly for low cost.
- Minimal corrosion resistance.
- Application Tools: C00169, C00369, C07569, C08569, and C40099.



Galvanized Carbon Steel Band

304 Stainless Steel Band

- Economical band suitable for light duty applications in typical atmospheres.
- Application Tools: C00169, C00369, C07569, C08569, and C40099.

CORROSION RESISTANT

316 Uncoated and Coated Stainless Steel Band

- Superior corrosion resistance in typical atmospheres and fresh water.
- Available with halogen free coating (PPA 571) for additional corrosion resistance and smoother edges.
- Application Tools for uncoated band: C00169, C00369, C07569, C08569, and C40099.
- Application Tools for coated band: C07569, C08569, and C40099.



316 Stainless Steel Band

317L Stainless Steel Band

- Superior corrosion resistance in industrial and marine atmospheres, salt water, and mild chemicals.
- Application Tools: C00169, C00369, and C40069.



Monel® 400 Band

Monel® 400 Band

- Superior corrosion resistance in marine, salt water, and harsh chemical environments.
- Application Tools: C00169, C00369, and C40069.

SPECIAL PURPOSE

All Purpose Band

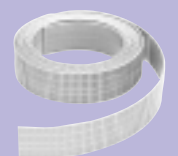
- Evenly spaced holes allow fastening with screw or nut and bolt.
- Uncoated or coated with halogen free coating (PPA 571).
- Easy to install with common hand tools.



All Purpose Band

Q-Band™

- Polypropylene band - ideal for hundreds of light duty applications.
- UV resistant.
- Can be tightened by hand or with easy-to-use Q-Band™ manual tool (Q72099).
- Reusable clamps.



Q70499 Q-Band™

Other Specialty Materials are available. Call for quote.



The Ultimate Clamping System



Ultra-Lok® Band and Buckle formed to a completed lock



1/2" Ultra-Lok® Band and Buckles



Ultra-Lok® Tote

Ultra-Lok® Band

| Part No. | Material* | Band Width | | Maximum Clamp Diameter | | | | Band Length | | Package Quantity | Package Weight | |
|----------|-----------|------------|------|------------------------|-------------|---------------|-----|-------------|------|------------------|----------------|-----|
| | | Inches | mm | Single Wrap | Double Wrap | In | mm | In | mm | | Lbs | Kg |
| UL1018** | 201 SS | 1/2 | 12.7 | 3 | 76 | not suggested | | 18 | 457 | 50/box | 4.1 | 1.9 |
| UL1024** | 201 SS | 1/2 | 12.7 | 5 | 127 | 2.5 | 64 | 24 | 610 | 50/box | 5.3 | 2.4 |
| UL1028** | 201 SS | 1/2 | 12.7 | 6 | 152 | 3.0 | 76 | 28 | 711 | 50/box | 6.4 | 2.9 |
| UL1032** | 201 SS | 1/2 | 12.7 | 7 | 178 | 3.5 | 89 | 32 | 813 | 50/box | 7.2 | 3.3 |
| UL1036** | 201 SS | 1/2 | 12.7 | 8 | 203 | 4.0 | 102 | 36 | 914 | 50/box | 8.0 | 3.6 |
| UL1046** | 201 SS | 1/2 | 12.7 | 11 | 279 | 5.5 | 140 | 46 | 1168 | 25/box | 5.9 | 2.7 |
| UL1056** | 201 SS | 1/2 | 12.7 | 14 | 356 | 7.0 | 178 | 56 | 1422 | 25/box | 7.1 | 3.2 |
| UL1070** | 201 SS | 1/2 | 12.7 | 18 | 457 | 9.0 | 229 | 70 | 1778 | 25/box | 8.5 | 3.9 |
| UL1086** | 201 SS | 1/2 | 12.7 | 22 | 559 | 11.0 | 280 | 86 | 2184 | 25/box | 10.2 | 4.6 |
| UL1096** | 201 SS | 1/2 | 12.7 | 25 | 635 | 12.5 | 318 | 96 | 2438 | 25/box | 11.2 | 5.1 |
| UL1106** | 201 SS | 1/2 | 12.7 | 28 | 711 | 14.0 | 356 | 106 | 2692 | 25/box | 12.3 | 5.6 |
| UL1116** | 201 SS | 1/2 | 12.7 | 31 | 787 | 15.5 | 394 | 116 | 2946 | 25/box | 13.3 | 6.0 |
| UL2020 | 201 SS | 3/4 | 19.1 | 4 | 102 | not suggested | | 20 | 508 | 30/tote | 4.3 | 2.0 |
| UL2024 | 201 SS | 3/4 | 19.1 | 5 | 140 | not suggested | | 24 | 610 | 25/tote | 4.1 | 1.9 |
| UL2028 | 201 SS | 3/4 | 19.1 | 6 | 152 | not suggested | | 28 | 711 | 21/tote | 4.3 | 2.0 |
| UL2032 | 201 SS | 3/4 | 19.1 | 7 | 178 | 3.5 | 89 | 32 | 813 | 19/tote | 4.3 | 2.0 |
| UL2036 | 201 SS | 3/4 | 19.1 | 8 | 252 | 4.0 | 102 | 36 | 914 | 33/tote | 8.2 | 3.7 |
| UL2040 | 201 SS | 3/4 | 19.1 | 10 | 254 | 4.5 | 127 | 40 | 1016 | 30/tote | 7.75 | 3.5 |
| UL2044 | 201 SS | 3/4 | 19.1 | 11 | 267 | 5.5 | 140 | 44 | 1118 | 27/tote | 8.2 | 3.7 |
| UL2048 | 201 SS | 3/4 | 19.1 | 12 | 305 | 6.0 | 153 | 48 | 1219 | 25/tote | 8.2 | 3.7 |
| UL2052 | 201 SS | 3/4 | 19.1 | 13 | 330 | 6.5 | 165 | 52 | 1321 | 23/tote | 8.2 | 3.7 |
| UL2060 | 201 SS | 3/4 | 19.1 | 15 | 381 | 7.5 | 191 | 60 | 1524 | 20/tote | 8.2 | 3.7 |
| UL2068 | 201 SS | 3/4 | 19.1 | 17 | 445 | 8.5 | 216 | 68 | 1727 | 17/tote | 8.2 | 3.7 |
| UL2076 | 201 SS | 3/4 | 19.1 | 20 | 508 | 10.0 | 254 | 76 | 1930 | 15/tote | 8.2 | 3.7 |
| UL2084 | 201 SS | 3/4 | 19.1 | 22 | 559 | 11.0 | 280 | 84 | 2134 | 14/tote | 8.2 | 3.7 |
| UL2092 | 201 SS | 3/4 | 19.1 | 24 | 622 | 12.0 | 305 | 92 | 2337 | 13/tote | 8.2 | 3.7 |
| UL2120 | 201SS | 3/4 | 19.1 | 32 | 826 | 16.0 | 407 | 120 | 3048 | 10/tote | 8.2 | 3.7 |
| UL2150 | 201 SS | 3/4 | 19.1 | 41 | 1029 | 20.5 | 508 | 150 | 3810 | 8/tote | 8.2 | 3.7 |
| UL2175 | 201 SS | 3/4 | 19.1 | 48 | 1232 | 24.0 | 610 | 175 | 4445 | 7/tote | 8.2 | 3.7 |

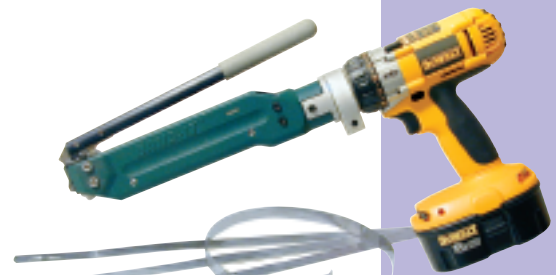
** 1/2" bands will require M09387 for UL4000 and UL9010 tool. Contact Factory.
3/4" width band lengths 36" or longer in 100' totes; 34" or less in 50' totes.
Ultra-Lok® is also available in preformed clamps, see page 32.

Ultra-Lok® Buckle

| Part No. | Material* | Description | Package Quantity | Package Weight Lbs. Kg |
|----------|-----------|--------------------------|------------------|------------------------|
| UB2549 | 201 SS | Ultra-Lok® Buckles, 1/2" | 100/box | 3.7 1.7 |
| UB2569 | 201 SS | Ultra-Lok® Buckles, 3/4" | 100/box | 3.7 1.7 |

Ultra-Lok® Tools

| Part No. | Description | Package Quantity | Package Weight Lbs. Kg |
|----------|--|------------------|------------------------|
| UL4000 | Ultra-Lok® 18-volt Rechargeable, Portable Tool | each | 17.5 7.9 |
| UL9010 | Ultra-Lok® 110-volt AC, Corded Electric Tool | each | 15 6.8 |
| ULK249 | Kit; Used to upgrade the tension body of the UL9000 and the UL9010 | each | 0.4 0.2 |
| M09387 | 1/2" Shear plate for UL4000, upgraded UL9000 and UL9010 to convert from 3/4" Ultra-Lok® to 1/2" Ultra-Lok® Clamp Systems | each | 0.1 0.1 |



Ultra-Lok® UL4000



Ultra-Lok® UL9010

SEE PAGE 32 FOR MORE DETAILS ON THE ULTRA-LOK® TOOLS.

*BAND-IT reserves the right to substitute material with equal or better corrosion resistance and/or mechanical specifications.



BAND-FAST™

BAND-FAST™ is ready to use band, pre-cut and pre-assembled with a clip, buckle or seal. Pre-assembled product gives you an edge over your competition as it saves up to 30% time and labor costs for your large projects. Wherever you traditionally use Band & Buckle, or have a need for innovative products, **BAND-FAST™** can do the job faster and with less scrap material! **BAND-FAST™** is available in many materials including: Monel®, Inconel®, AL6XN®, Titanium, AL2003™, 316SS and others upon request.



Determining the correct length for BAND-FAST™ products

When determining the correct product length, **BAND-FAST™** is measured from end to end.

BAND-FAST™ Precut and Assembled with Clip

| Part No. | Material* | Width | | Thickness | | Finished Length In cm | Maximum Diameter | | Package Quantity | Package Weight | | Application Tools | | |
|----------|-----------|-------|------|-----------|------|--------------------------|----------------------|----------------------|------------------|----------------|--------|-------------------|---|-----|
| | | In | mm | In | mm | | Single Wrap In mm | Double Wrap In mm | | Lbs | Kg | | | |
| L20399 | 201 SS | 1/4 | 6.4 | 0.020 | 0.51 | 10 25 | 2 | 50 | not suggested | 100/box | 2.2 | 0.9 | C00169 C00369 C07569 J02069† C40099 | |
| L20499 | 201 SS | 1/4 | 6.4 | 0.020 | 0.51 | 16 40 | 3-1/2 | 88 | 1-1/2 | 38 | 3.1 | 1.4 | | |
| L20799 | 201 SS | 1/4 | 6.4 | 0.020 | 0.51 | 19 48 | 5 | 127 | 2-1/2 | 63 | 3.5 | 1.6 | | |
| L20899 | 201 SS | 1/4 | 6.4 | 0.020 | 0.51 | 26 68 | 7 | 177 | 3-1/2 | 88 | 4.6 | 2.1 | | |
| L21099 | 201 SS | 1/4 | 6.4 | 0.020 | 0.51 | 34 86 | 9 | 228 | 4-1/2 | 114 | 5.6 | 2.6 | | |
| L22199 | 201 SS | 3/8 | 9.6 | 0.025 | 0.64 | 16 40 | 3-1/2 | 88 | 1-1/2 | 38 | 6.2 | 2.8 | | |
| L22999 | 201 SS | 3/8 | 9.6 | 0.025 | 0.64 | 44 112 | 12 | 305 | 6 | 152 | 3.6 | 1.6 | | |
| L24299 | 201 SS | 1/2 | 12.7 | 0.030 | 0.76 | 18 45 | 4 | 102 | 2 | 50 | 10.5 | 4.8 | | |
| L24699 | 201 SS | 1/2 | 12.7 | 0.030 | 0.76 | 31 78 | 8 | 203 | 4 | 101 | 4.7 | 2.1 | | |
| L26399 | 201 SS | 5/8 | 15.9 | 0.030 | 0.76 | 21 53 | 5 | 127 | 2-1/2 | 63 | 15.1 | 6.8 | | |
| L27199 | 201 SS | 5/8 | 15.9 | 0.030 | 0.76 | 56 142 | 16 | 406 | 8 | 203 | 9.0 | 4.1 | | |
| L27399 | 201 SS | 5/8 | 15.9 | 0.030 | 0.76 | 69 508 | 20 | 508 | 10 | 175 | 10.7 | 4.8 | | |
| L28499 | 201 SS | 3/4 | 19.1 | 0.030 | 0.76 | 24 60 | 6 | 152 | 3 | 76 | 50/box | 10.9 | | 4.9 |
| L28899 | 201 SS | 3/4 | 19.1 | 0.030 | 0.76 | 37 93 | 10 | 254 | 5 | 127 | 25/box | 7.6 | | 3.5 |
| L29099 | 201 SS | 3/4 | 19.1 | 0.030 | 0.76 | 50 127 | 14 | 355 | 7 | 177 | 25/box | 9.7 | | 4.4 |
| L29299 | 201 SS | 3/4 | 19.1 | 0.030 | 0.76 | 62 157 | 18 | 457 | 9 | 228 | 25/box | 11.6 | | 5.3 |

† The J02069 can be used with 3/8" maximum width product.

BAND-FAST™ Precut and Assembled with Ear-Lokt Buckle

| Part No. | Material* | Width | | Thickness | | Finished Length In cm | Maximum Diameter | | Package Quantity | Package Weight | | Application Tools |
|----------------|-----------|-------|------|-----------|------|--------------------------|----------------------|----------------------|------------------|----------------|--------|--------------------------------------|
| | | In | mm | In | mm | | Single Wrap In mm | Double Wrap In mm | | Lbs | Kg | |
| BFES-A0830-020 | 201 SS | 1/2 | 12.7 | 0.030 | 0.76 | 20 51 | 4 | 102 | 2 | 51 | 25/box | C00169 C00369 C07569 C40099 |
| BFES-A0830-024 | 201 SS | 1/2 | 12.7 | 0.030 | 0.76 | 24 61 | 5 | 127 | 2.5 | 64 | 25/box | |
| BFES-A0830-027 | 201 SS | 1/2 | 12.7 | 0.030 | 0.76 | 27 69 | 6 | 152 | 3 | 76 | 25/box | |
| BFES-A0830-034 | 201 SS | 1/2 | 12.7 | 0.030 | 0.76 | 34 86 | 8 | 203 | 4 | 102 | 25/box | |
| BFES-A0830-041 | 201 SS | 1/2 | 12.7 | 0.030 | 0.76 | 41 104 | 10 | 254 | 5 | 127 | 25/box | |
| BFES-A0830-048 | 201 SS | 1/2 | 12.7 | 0.030 | 0.76 | 48 122 | 12 | 305 | 6 | 152 | 25/box | |
| BFES-A0830-055 | 201 SS | 1/2 | 12.7 | 0.030 | 0.76 | 55 140 | 14 | 356 | 7 | 178 | 25/box | |
| BFES-A0830-069 | 201 SS | 1/2 | 12.7 | 0.030 | 0.76 | 69 175 | 18 | 457 | 9 | 229 | 25/box | |
| BFES-A0830-076 | 201 SS | 1/2 | 12.7 | 0.030 | 0.76 | 76 193 | 20 | 508 | 10 | 254 | 15/box | |
| BFES-A0830-090 | 201 SS | 1/2 | 12.7 | 0.030 | 0.76 | 90 229 | 24 | 610 | 12 | 305 | 15/box | |
| BFES-A1230-020 | 201 SS | 3/4 | 19.1 | 0.030 | 0.76 | 20 51 | 4 | 102 | 2 | 51 | 25/box | |
| BFES-A1230-024 | 201 SS | 3/4 | 19.1 | 0.030 | 0.76 | 24 61 | 5 | 127 | 2.5 | 64 | 25/box | |
| BFES-A1230-027 | 201 SS | 3/4 | 19.1 | 0.030 | 0.76 | 27 69 | 6 | 152 | 3 | 76 | 25/box | |
| BFES-A1230-034 | 201 SS | 3/4 | 19.1 | 0.030 | 0.76 | 34 86 | 8 | 203 | 4 | 102 | 25/box | |
| BFES-A1230-041 | 201 SS | 3/4 | 19.1 | 0.030 | 0.76 | 41 104 | 10 | 254 | 5 | 127 | 25/box | |
| BFES-A1230-048 | 201 SS | 3/4 | 19.1 | 0.030 | 0.76 | 48 122 | 12 | 305 | 6 | 152 | 25/box | |
| BFES-A1230-055 | 201 SS | 3/4 | 19.1 | 0.030 | 0.76 | 55 140 | 14 | 356 | 7 | 178 | 25/box | |
| BFES-A1230-069 | 201 SS | 3/4 | 19.1 | 0.030 | 0.76 | 69 175 | 18 | 457 | 9 | 229 | 25/box | |
| BFES-A1230-076 | 201 SS | 3/4 | 19.1 | 0.030 | 0.76 | 76 193 | 20 | 508 | 10 | 254 | 15/box | |
| BFES-A1230-090 | 201 SS | 3/4 | 19.1 | 0.030 | 0.76 | 90 229 | 24 | 610 | 12 | 305 | 15/box | |

*BAND-IT reserves the right to substitute material with equal or better corrosion resistance and/or mechanical specifications.



BAND-FAST™ is now available in standard pre-determined lengths as well as custom lengths and materials. Call for special quote.

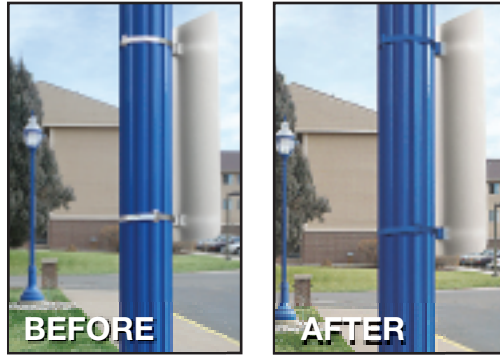


See page 3.

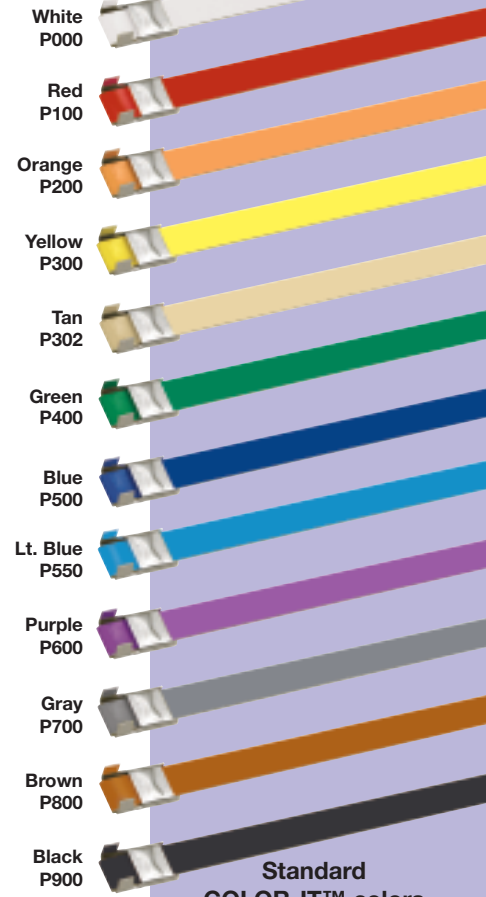
COLOR-IT™

Polyester

COLOR-IT™ coatings are available in a variety of colors and types providing superior performance and manufactured with your specific application in mind. Whether you are color-matching decorative light poles, identifying materials, or matching existing hardware on specific projects, COLOR-IT™ has the right coating for your project needs. Products coated with COLOR-IT™ work with standard banding tools.



COLOR-IT™



Standard
COLOR-IT™ colors

Roll Band with COLOR-IT™ - Polyester

| Part No. | Material* | Width | | Thickness | | Package Quantity | Package Weight | | Color | RAL# | Application Tools |
|-------------|-----------|-------|------|-----------|------|------------------|----------------|-----|----------|------|--|
| | | In | mm | In | mm | | Lbs. | Kg | | | |
| C204C9-P000 | 201SS | 1/2 | 12.7 | 0.030 | 0.76 | 100'/roll | 5.1 | 2.3 | White | 9016 | C00169 C00369 C07569 C08569 C40099 |
| C204C9-P100 | 201SS | 1/2 | 12.7 | 0.030 | 0.76 | 100'/roll | 5.1 | 2.3 | Red | 3001 | |
| C204C9-P200 | 201SS | 1/2 | 12.7 | 0.030 | 0.76 | 100'/roll | 5.1 | 2.3 | Orange | 2008 | |
| C204C9-P300 | 201SS | 1/2 | 12.7 | 0.030 | 0.76 | 100'/roll | 5.1 | 2.3 | Yellow | 1018 | |
| C204C9-P302 | 201SS | 1/2 | 12.7 | 0.030 | 0.76 | 100'/roll | 5.1 | 2.3 | Tan | 1001 | |
| C204C9-P400 | 201SS | 1/2 | 12.7 | 0.030 | 0.76 | 100'/roll | 5.1 | 2.3 | Green | 6032 | |
| C204C9-P500 | 201SS | 1/2 | 12.7 | 0.030 | 0.76 | 100'/roll | 5.1 | 2.3 | Blue | 5002 | |
| C204C9-P550 | 201SS | 1/2 | 12.7 | 0.030 | 0.76 | 100'/roll | 5.1 | 2.3 | Lt. Blue | 5012 | |
| C204C9-P600 | 201SS | 1/2 | 12.7 | 0.030 | 0.76 | 100'/roll | 5.1 | 2.3 | Purple | 4008 | |
| C204C9-P700 | 201SS | 1/2 | 12.7 | 0.030 | 0.76 | 100'/roll | 5.1 | 2.3 | Gray | 7036 | |
| C204C9-P800 | 201SS | 1/2 | 12.7 | 0.030 | 0.76 | 100'/roll | 5.1 | 2.3 | Brown | 8002 | |
| C204C9-P900 | 201SS | 1/2 | 12.7 | 0.030 | 0.76 | 100'/roll | 5.1 | 2.3 | Black | 9004 | |
| C206C9-P900 | 201SS | 3/4 | 19.1 | 0.030 | 0.76 | 100'/roll | 7.6 | 3.4 | Black | 9004 | |

Ear-Lokt Buckles with COLOR-IT™ - Polyester

| Part No. | Material* | Width | | Package Quantity | Package Weight | | Color | RAL# | Application Tools |
|-------------|-----------|-------|------|------------------|----------------|-----|-------|------|----------------------------------|
| | | In | mm | | Lbs. | Kg | | | |
| C25499-D900 | 201SS | 1/2 | 12.7 | 100/box | 1.7 | 0.8 | Black | 9004 | C00169, C00369 C07569, C08569 |
| C25699-D900 | 201SS | 3/4 | 19.1 | 100/box | 3.5 | 1.6 | Black | 9004 | |



BAND-IT Can Match Any Color. Call for Quote.



Roll Band with
COLOR-IT™ Polyester

BAND-FAST™ with Ear-Lokt Buckle with COLOR-IT™ - Polyester

| Part No. | Material* | Width | | Thickness | | Finished Length | Maximum Diameter | | Package Quantity | Color | Application Tools | | |
|-----------------------|-----------|-------|------|-----------|------|-----------------|------------------|-------------|------------------|-------|-------------------|--------|--|
| | | In | mm | In | mm | | Single Wrap | Double Wrap | | | | | |
| BFES-A0830-020-P900C† | 201 SS | 1/2 | 12.7 | 0.030 | 0.76 | 20 | 51 | 4 | 102 | 2 | 51 | 25/box | C00169 C00369 C07569 C40099 C08569 |
| BFES-A0830-024-P900C† | 201 SS | 1/2 | 12.7 | 0.030 | 0.76 | 24 | 61 | 5 | 127 | 2.5 | 64 | 25/box | |
| BFES-A0830-027-P900C† | 201 SS | 1/2 | 12.7 | 0.030 | 0.76 | 27 | 69 | 6 | 152 | 3 | 76 | 25/box | |
| BFES-A0830-034-P900C† | 201 SS | 1/2 | 12.7 | 0.030 | 0.76 | 34 | 86 | 8 | 203 | 4 | 102 | 25/box | |
| BFES-A0830-041-P900C† | 201 SS | 1/2 | 12.7 | 0.030 | 0.76 | 41 | 104 | 10 | 254 | 5 | 127 | 25/box | |
| BFES-A0830-048-P900C† | 201 SS | 1/2 | 12.7 | 0.030 | 0.76 | 48 | 122 | 12 | 305 | 6 | 152 | 25/box | |
| BFES-A0830-055-P900C† | 201 SS | 1/2 | 12.7 | 0.030 | 0.76 | 55 | 140 | 14 | 356 | 7 | 178 | 25/box | |
| BFES-A0830-069-P900C† | 201 SS | 1/2 | 12.7 | 0.030 | 0.76 | 69 | 175 | 18 | 457 | 9 | 229 | 25/box | |
| BFES-A0830-076-P900C† | 201 SS | 1/2 | 12.7 | 0.030 | 0.76 | 76 | 193 | 20 | 508 | 10 | 254 | 15/box | |
| BFES-A0830-090-P900C† | 201 SS | 1/2 | 12.7 | 0.030 | 0.76 | 90 | 229 | 24 | 610 | 12 | 305 | 15/box | |
| BFES-A1230-020-P900C | 201 SS | 3/4 | 19.1 | 0.030 | 0.76 | 20 | 51 | 4 | 102 | 2 | 51 | 25/box | |
| BFES-A1230-024-P900C | 201 SS | 3/4 | 19.1 | 0.030 | 0.76 | 24 | 61 | 5 | 127 | 2.5 | 64 | 25/box | |
| BFES-A1230-027-P900C | 201 SS | 3/4 | 19.1 | 0.030 | 0.76 | 27 | 69 | 6 | 152 | 3 | 76 | 25/box | |
| BFES-A1230-034-P900C | 201 SS | 3/4 | 19.1 | 0.030 | 0.76 | 34 | 86 | 8 | 203 | 4 | 102 | 25/box | |
| BFES-A1230-041-P900C | 201 SS | 3/4 | 19.1 | 0.030 | 0.76 | 41 | 104 | 10 | 254 | 5 | 127 | 25/box | |
| BFES-A1230-048-P900C | 201 SS | 3/4 | 19.1 | 0.030 | 0.76 | 48 | 122 | 12 | 305 | 6 | 152 | 25/box | |
| BFES-A1230-055-P900C | 201 SS | 3/4 | 19.1 | 0.030 | 0.76 | 55 | 140 | 14 | 356 | 7 | 178 | 25/box | |
| BFES-A1230-069-P900C | 201 SS | 3/4 | 19.1 | 0.030 | 0.76 | 69 | 175 | 18 | 457 | 9 | 229 | 25/box | |
| BFES-A1230-076-P900C | 201 SS | 3/4 | 19.1 | 0.030 | 0.76 | 76 | 193 | 20 | 508 | 10 | 254 | 15/box | |
| BFES-A1230-090-P900C | 201 SS | 3/4 | 19.1 | 0.030 | 0.76 | 90 | 229 | 24 | 610 | 12 | 305 | 15/box | |

†BAND-FAST™ in 1/2" wide 201 SS is also available in other COLOR-IT™ colors and buckle configurations. Please call for more information.

*BAND-IT reserves the right to substitute material with equal or better corrosion resistance and/or mechanical specifications.



Ear-Lokt Buckle
with COLOR-IT™
Black Polyester



BAND-FAST™
with COLOR-IT™
Black Polyester



201 Stainless Steel BAND-IT® BAND

| Part No. | Material* | Width | | Thickness | | Average Breaking Strength (lbs) | Package Quantity | Package Weight | | Application Tools |
|----------|-----------|-------|------|-----------|------|---------------------------------|-----------------------|----------------|-----|---|
| | | In | mm | In | mm | | | Lbs | Kg | |
| C20299 | 201 SS | 1/4 | 6.4 | 0.020 | 0.51 | 500 | 100'/roll | 1.7 | 0.7 | C00169 C00369 C07569 C08569 C40099 J02069† |
| C20399 | 201 SS | 3/8 | 9.6 | 0.025 | 0.64 | 900 | 100'/roll | 3.2 | 1.5 | |
| C203Y9 | 201 SS | 3/8 | 9.6 | 0.025 | 0.64 | 900 | Yellow Tote 100'/roll | 3.6 | 1.6 | |
| C20499 | 201 SS | 1/2 | 12.7 | 0.030 | 0.76 | 1500 | 100'/roll | 5.1 | 2.3 | |
| C204B9 | 201 SS | 1/2 | 12.7 | 0.030 | 0.76 | 1500 | Blue Tote 100'/roll | 5.5 | 2.5 | |
| C20599 | 201 SS | 5/8 | 15.9 | 0.030 | 0.76 | 1875 | 100'/roll | 6.4 | 2.9 | |
| C205G9 | 201 SS | 5/8 | 15.9 | 0.030 | 0.76 | 1875 | Green Tote 100'/roll | 6.8 | 3.1 | |
| C20699 | 201 SS | 3/4 | 19.1 | 0.030 | 0.76 | 2250 | 100'/roll | 7.7 | 3.5 | |
| C206R9 | 201 SS | 3/4 | 19.1 | 0.030 | 0.76 | 2250 | Red Tote 100'/roll | 8.2 | 3.7 | |

† The J02069 can be used with 3/8" maximum width product.

BAND-IT® Buckle Ear-Lokt Style

| Part No. | Material* | Width | | Package Quantity | Package Weight | |
|----------|-----------|-------|------|------------------|----------------|-----|
| | | In | mm | | Lbs | Kg |
| C25299** | SS | 1/4 | 6.4 | 100/box | 0.3 | 0.1 |
| C25399 | SS | 3/8 | 9.6 | 100/box | 0.8 | 0.4 |
| C25499 | SS | 1/2 | 12.7 | 100/box | 2.1 | 1.0 |
| C25599 | SS | 5/8 | 15.9 | 100/box | 2.4 | 1.1 |
| C25699 | SS | 3/4 | 19.1 | 100/box | 3.7 | 1.7 |

**Clip style.

Giant Band

| Part No. | Material* | Width | | Thickness | | Average Breaking Strength (lbs) | Package Quantity | Package Weight | | Application Tools |
|----------|-----------|-------|------|-----------|------|---------------------------------|------------------|----------------|-----|--------------------|
| | | In | mm | In | mm | | | Lbs | Kg | |
| G43099 | 201 SS | 3/4 | 19.1 | 0.044 | 1.10 | 3300 | 100'/roll | 11.6 | 5.4 | C00369 (3/4" only) |
| G43199 | 201 SS | 1 | 25.4 | 0.044 | 1.10 | 4400 | 100'/roll | 13.7 | 6.4 | G40269 |
| G43299 | 201 SS | 1 1/4 | 31.8 | 0.044 | 1.10 | 5500 | 100'/roll | 17.2 | 8.0 | |

Galvanized Carbon Steel also available.

Giant Buckle Ear-Lokt Style

| Part No. | Material* | Width | | Package Quantity | Package Weight | |
|----------|-----------|-------|------|------------------|----------------|-----|
| | | In | mm | | Lbs | Kg |
| G44099 | SS | 3/4 | 19.1 | 25/box | 1.8 | 0.8 |
| G44199 | SS | 1 | 25.4 | 25/box | 2.4 | 1.1 |
| G44299 | SS | 1 1/4 | 31.8 | 25/box | 3.2 | 1.4 |

Hand Tools for Band and Buckle

| Part No. | Description | Package Weight | |
|----------|--|----------------|-----|
| | | Lbs. | Kg |
| C00169 | BAND-IT® Tool - For band widths from 3/16" to 3/4" | 4.3 | 1.8 |
| C00369 | BAND-IT® Heavy Duty Tool - For band widths from 3/16" to 3/4" | 4.3 | 1.8 |
| C07569 | Bantam Tool Low torque - For band widths from 3/16" to 3/4" | 2.6 | 1.1 |
| C08569 | Bantam strapping tool - Low torque for band widths from 3/16" to 3/4" | 2.6 | 1.1 |
| C40099 | Ratchet Tool - For band widths from 3/16" to 3/4" Ratchet style alternative to C00169 | 3.3 | 1.4 |
| G40269 | Giant Tool - For use with only Giant Band from 3/4" to 1 1/4" | 10.4 | 4.5 |
| J02069 | Pok-It II Tool with cutter - For band widths from 3/16" to 3/8" wide | 0.8 | 0.3 |
| J07599 | Thriftool®, 10 Pack - Applies tension, 3/16" - 3/8" wide band, BAND-FAST™, BAND-IT Jr.® Clamps | 5.9 | 2.7 |

*BAND-IT reserves the right to substitute material with equal or better corrosion resistance and/or mechanical specifications.



Hand Tools for Band & Buckle



C00169 BAND-IT® Tool

BAND-IT® Band



Ear-Lokt Buckle



C00369 BAND-IT® Heavy Duty Tool



C07569 Bantam Tool

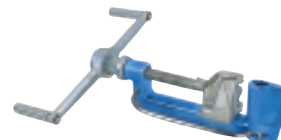
Giant Band



Giant Ear-Lokt Buckle



C08569 Bantam Strapping Tool



G40269 Giant Tool



C40099 Ratchet Tool



J02069 Pok-It II Tool with Cutter



See page 3.

www.BAND-IT-IDEX.com 13

VALU-STRAP™

| Part No. | Material* | Width | | Thickness | | Average Breaking Strength (lbs) | Package Quantity | Package Weight | | Application Tools |
|----------|-----------|-------|------|-----------|------|---------------------------------|------------------|----------------|-----|---|
| | | In | mm | In | mm | | | Lbs | Kg | |
| C13199 | SS | 3/16 | 4.8 | 0.015 | 0.38 | 280 | 100'/roll | 1.2 | 0.5 | C00169 C00369 C07569 C08569 C40099 J02069† |
| C13399 | SS | 3/8 | 9.6 | 0.015 | 0.38 | 450 | 100'/roll | 2.2 | 1.0 | |
| C13499 | SS | 1/2 | 12.7 | 0.015 | 0.38 | 600 | 100'/roll | 2.9 | 1.3 | |
| C13599 | SS | 5/8 | 15.9 | 0.015 | 0.38 | 750 | 100'/roll | 3.6 | 1.7 | |
| C13699 | SS | 3/4 | 19.1 | 0.015 | 0.38 | 900 | 100'/roll | 4.4 | 2.0 | |
| C12799 | SS | 3/8 | 9.6 | 0.015 | 0.38 | 450 | 200'/roll | 4.4 | 2.0 | |
| C12899 | SS | 1/2 | 12.7 | 0.015 | 0.38 | 600 | 200'/roll | 5.8 | 2.6 | |
| C12999 | SS | 5/8 | 15.9 | 0.015 | 0.38 | 750 | 200'/roll | 7.3 | 3.2 | |
| C13099 | SS | 3/4 | 19.1 | 0.015 | 0.38 | 900 | 200'/roll | 8.8 | 3.9 | |

These products available in 300' rolls & Mill coil.

† The J02069 can be used with 3/8" maximum width product.

VALU-STRAP™ Plus

| Part No. | Material* | Width | | Thickness | | Average Breaking Strength (lbs) | Package Quantity | Package Weight | | Application Tools |
|----------|-----------|-------|------|-----------|------|---------------------------------|------------------|----------------|-----|---|
| | | In | mm | In | mm | | | Lbs | Kg | |
| C19199 | SS | 3/8 | 9.6 | 0.020 | 0.51 | 600 | 100'/roll | 2.9 | 1.3 | C00169 C00369 C07569 C08569 C40099 J02069† |
| C18189 | SS | 1/2 | 12.7 | 0.020 | 0.51 | 850 | 100'/roll | 3.8 | 1.7 | |
| C17199 | SS | 5/8 | 15.9 | 0.020 | 0.51 | 1000 | 100'/roll | 5.6 | 2.6 | |
| C16189 | SS | 3/4 | 19.1 | 0.020 | 0.51 | 1275 | 100'/roll | 5.7 | 2.5 | |
| C19399 | SS | 3/8 | 9.6 | 0.020 | 0.51 | 600 | 200'/roll | 5.8 | 2.6 | |
| C18389 | SS | 1/2 | 12.7 | 0.020 | 0.51 | 850 | 200'/roll | 7.6 | 3.4 | |
| C17399 | SS | 5/8 | 15.9 | 0.020 | 0.51 | 1000 | 200'/roll | 11.2 | 5.2 | |
| C16389 | SS | 3/4 | 19.1 | 0.020 | 0.51 | 1275 | 200'/roll | 11.4 | 5.0 | |

† The J02069 can be used with 3/8" maximum width product.

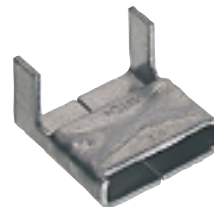
Valuband

| Part No. | Material* | Width | | Thickness | | Average Breaking Strength (lbs) | Package Quantity | Package Weight | | Application Tools |
|----------|-----------|-------|------|-----------|------|---------------------------------|------------------|----------------|-----|--|
| | | In | mm | In | mm | | | Lbs | Kg | |
| C14499 | SS | 1/2 | 12.7 | 0.025 | 0.64 | 1000 | 100'/roll | 4.5 | 2.0 | C00169 C00369 C07569 C08569 C40099 |
| C14599 | SS | 5/8 | 15.9 | 0.025 | 0.64 | 1250 | 100'/roll | 5.6 | 2.6 | |
| C14699 | SS | 3/4 | 19.1 | 0.025 | 0.64 | 1590 | 100'/roll | 6.7 | 3.0 | |
| C14899 | SS | 1/2 | 12.7 | 0.025 | 0.64 | 1000 | 200'/roll | 9.0 | 4.0 | |
| C14999 | SS | 5/8 | 15.9 | 0.025 | 0.64 | 1250 | 200'/roll | 11.2 | 5.2 | |
| C15099 | SS | 3/4 | 19.1 | 0.025 | 0.64 | 1590 | 200'/roll | 13.4 | 6.0 | |

These products available in 300' rolls & Mill coil.

Valuclip

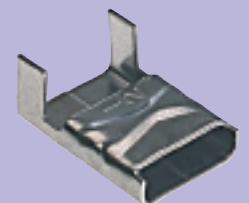
| Part No. | Material* | Width | | Package Quantity | Package Weight | |
|----------|-----------|-------|------|------------------|----------------|-----|
| | | In | mm | | Lbs | Kg |
| C15199 | SS | 3/16 | 4.8 | 100/box | 0.2 | 0.1 |
| C15399 | SS | 3/8 | 9.6 | 100/box | 0.6 | 0.3 |
| C15499 | SS | 1/2 | 12.7 | 100/box | 1.1 | 0.5 |
| C15599 | SS | 5/8 | 15.9 | 100/box | 1.2 | 0.5 |
| C15699 | SS | 3/4 | 19.1 | 100/box | 2.1 | 0.9 |



Valuclip

Stainless Steel Clip

| Part No. | Material* | Width | | Package Quantity | Package Weight | |
|----------|-----------|-------|------|------------------|----------------|-----|
| | | In | mm | | Lbs | Kg |
| C25299 | SS | 1/4 | 6.4 | 100/box | 0.3 | 0.1 |
| L15399 | SS | 3/8 | 9.6 | 100/box | 0.9 | 0.4 |
| L15499 | SS | 1/2 | 12.7 | 100/box | 1.5 | 0.7 |
| L15599 | SS | 5/8 | 15.9 | 100/box | 1.8 | 0.8 |
| L15699 | SS | 3/4 | 19.1 | 100/box | 2.6 | 1.2 |



Stainless Steel Clip

Galvanized Carbon Steel Band

| Part No. | Material* | Width | | Thickness | | Average Breaking Strength (lbs) | Package Quantity | Package Weight | | Application Tools |
|----------|-----------|-------|------|-----------|------|---------------------------------|------------------|----------------|-----|--|
| | | In | mm | In | mm | | | Lbs | Kg | |
| C30399 | GCS | 3/8 | 9.6 | 0.025 | 0.63 | 700 | 100'/roll | 3.3 | 1.6 | C00169 C00369 C07569 C08569, C40099 |
| C30499 | GCS | 1/2 | 12.7 | 0.030 | 0.76 | 1125 | 100'/roll | 5.1 | 2.4 | |
| C30599 | GCS | 5/8 | 15.9 | 0.030 | 0.76 | 1405 | 100'/roll | 6.4 | 3.0 | |
| C30699 | GCS | 3/4 | 19.1 | 0.030 | 0.76 | 1690 | 100'/roll | 7.7 | 3.6 | |

These products available in Mill coil.

*BAND-IT reserves the right to substitute material with equal or better corrosion resistance and/or mechanical specifications.



C40099 Ratchet Tool
For product information see page 13.



VALU-STRAP™



Thriftool®
For product information see page 13.



C07569 Bantam Tool
For product information see page 13.



Galvanized Carbon Steel Band



Galvanized Carbon Steel Ear-Lokt Buckle

| Part No. | Material* | Width | | Package Quantity | Package Weight | |
|----------|-----------|-------|------|------------------|----------------|-----|
| | | In | mm | | Lbs | Kg |
| C35399 | GCS | 3/8 | 9.6 | 100/box | 0.8 | 0.4 |
| C35499 | GCS | 1/2 | 12.7 | 100/box | 2.1 | 1.0 |
| C35599 | GCS | 5/8 | 15.9 | 100/box | 2.4 | 1.1 |
| C35699 | GCS | 3/4 | 19.1 | 100/box | 3.7 | 1.7 |

304 Stainless Steel Band

| Part No. | Material* | Width | | Thickness | | Average Breaking Strength (lbs) | Package Quantity | Package Weight | | Application Tools |
|----------|-----------|-------|------|-----------|------|---------------------------------|------------------|----------------|-----|---|
| | | In | mm | In | mm | | | Lbs | Kg | |
| C90399 | 304 SS | 3/8 | 9.6 | 0.015 | 0.38 | 450 | 200'/roll | 4.4 | 2.0 | C00169 C00369 C07569 C08569 C40099 J02069† |
| C91399 | 304 SS | 3/8 | 9.6 | 0.020 | 0.51 | 600 | 200'/roll | 5.9 | 2.7 | |
| C90499 | 304 SS | 1/2 | 12.7 | 0.015 | 0.38 | 600 | 200'/roll | 5.8 | 2.6 | |
| C91499 | 304 SS | 1/2 | 12.7 | 0.020 | 0.51 | 850 | 200'/roll | 7.6 | 3.4 | |
| C90599 | 304 SS | 5/8 | 15.9 | 0.015 | 0.38 | 750 | 200'/roll | 7.3 | 3.2 | |
| C91599 | 304 SS | 5/8 | 15.9 | 0.020 | 0.51 | 1000 | 200'/roll | 9.5 | 4.3 | |
| C90699 | 304 SS | 3/4 | 19.1 | 0.015 | 0.38 | 900 | 200'/roll | 8.8 | 3.9 | |
| C91699 | 304 SS | 3/4 | 19.1 | 0.020 | 0.51 | 1275 | 200'/roll | 11.3 | 5.0 | |

† The J02069 can be used with 3/8" maximum width product.

316 Stainless Steel Band Uncoated and Coated

| Part No. | Material* | Width | | Thickness | | Average Breaking Strength (lbs) | Package Quantity | Package Weight | | Application Tools |
|----------|-----------|-------|------|-----------|------|---------------------------------|-----------------------|----------------|-----|---|
| | | In | mm | In | mm | | | Lbs | Kg | |
| C40299 | 316 SS | 1/4 | 6.4 | 0.020 | 0.51 | 400 | 100'/roll | 2.0 | 0.9 | C00169 C07569 C08569 C00369 C40099 J02069† |
| C40399 | 316 SS | 3/8 | 9.6 | 0.025 | 0.64 | 750 | 100'/roll | 3.5 | 1.6 | |
| C403Y9 | 316 SS | 3/8 | 9.6 | 0.025 | 0.64 | 750 | Yellow Tote 100'/roll | 3.7 | 1.7 | |
| C40499 | 316 SS | 1/2 | 12.7 | 0.030 | 0.76 | 1200 | 100'/roll | 4.9 | 2.2 | |
| C404B9 | 316 SS | 1/2 | 12.7 | 0.030 | 0.76 | 1200 | Blue Tote 100'/roll | 5.6 | 2.6 | |
| C40599 | 316 SS | 5/8 | 15.9 | 0.030 | 0.76 | 1500 | 100'/roll | 6.2 | 2.8 | |
| C405G9 | 316 SS | 5/8 | 15.9 | 0.030 | 0.76 | 1500 | Green Tote 100'/roll | 6.9 | 3.1 | |
| C40699 | 316 SS | 3/4 | 19.1 | 0.030 | 0.76 | 1800 | 100'/roll | 7.5 | 3.4 | |
| C406R9 | 316 SS | 3/4 | 19.1 | 0.030 | 0.76 | 1800 | Red Tote 100'/roll | 8.2 | 3.7 | |
| C44499 | 316 SS | 1/2 | 12.7 | 0.015 | 0.38 | 600 | 200'/roll | 5.7 | 2.6 | |
| C444B9 | 316 SS | 1/2 | 12.7 | 0.015 | 0.38 | 600 | Blue Tote 200'/roll | 5.8 | 2.7 | |
| C44599 | 316 SS | 5/8 | 15.9 | 0.015 | 0.38 | 750 | 200'/roll | 6.7 | 3.0 | |
| C445G9 | 316 SS | 5/8 | 15.9 | 0.015 | 0.38 | 750 | Green Tote 200'/roll | 6.9 | 3.1 | |
| C44699 | 316 SS | 3/4 | 19.1 | 0.015 | 0.38 | 900 | 200'/roll | 8.3 | 3.8 | |
| C446R9 | 316 SS | 3/4 | 19.1 | 0.015 | 0.38 | 900 | Red Tote 200'/roll | 8.4 | 3.8 | |

These products available in Mill coil.

† The J02069 can be used with 3/8" maximum width product.

316 Stainless Steel Coated Band

| Part No. | Material* | Width In | Width mm | Thickness | Average Breaking Strength (lbs) | Package Quantity | Package Weight Lbs | Package Weight Kg | Application Tools |
|----------|-----------|----------|----------|---------------|---------------------------------|------------------|--------------------|-------------------|----------------------------|
| AE4329 | 316 SS | 1/4 | 6.4 | 0.048**1.22** | 335 | 82.5'/roll | 2.0 | 0.9 | C07569 C08569 C40099 |
| AE4339 | 316 SS | 3/8 | 9.6 | 0.048**1.22** | 505 | 82.5'/roll | 2.6 | 1.2 | |
| AE4349 | 316 SS | 1/2 | 12.7 | 0.048**1.22** | 670 | 82.5'/roll | 3.5 | 1.6 | |
| AE4359 | 316 SS | 5/8 | 15.9 | 0.048**1.22** | 840 | 82.5'/roll | 4.4 | 2.0 | |
| AE4369 | 316 SS | 3/4 | 19.1 | 0.048**1.22** | 1000 | 82.5'/roll | 5.3 | 2.4 | |

**Material thickness includes PPA 571 coating - Base material thickness is 0.015".

316 Stainless Steel Clip

| Part No. | Material* | Width In | Width mm | Package Quantity | Package Weight Lbs | Package Weight Kg |
|----------|-----------|----------|----------|------------------|--------------------|-------------------|
| AE4529 | 316 SS | 1/4 | 6.4 | 100/box | 0.3 | 0.1 |
| AE4539 | 316 SS | 3/8 | 9.6 | 100/box | 0.6 | 0.3 |
| AE4549 | 316 SS | 1/2 | 12.7 | 100/box | 1.0 | 0.4 |
| AE4559 | 316 SS | 5/8 | 15.9 | 100/box | 1.1 | 0.5 |
| AE4569 | 316 SS | 3/4 | 19.1 | 100/box | 1.3 | 0.6 |

316 Stainless Steel Ear-Lokt Buckle

| Part No. | Material* | Width In | Width mm | Package Quantity | Package Weight Lbs | Package Weight Kg |
|----------|-----------|----------|----------|------------------|--------------------|-------------------|
| C45299** | 316 SS | 1/4 | 6.4 | 100/box | 0.3 | 0.1 |
| C45399 | 316 SS | 3/8 | 9.6 | 100/box | 0.8 | 0.4 |
| C45499 | 316 SS | 1/2 | 12.7 | 100/box | 2.1 | 1.0 |
| C45599 | 316 SS | 5/8 | 15.9 | 100/box | 2.4 | 1.1 |
| C45699 | 316 SS | 3/4 | 19.1 | 100/box | 3.7 | 1.7 |

** Clip style

Stainless Steel Scru-Lokt Buckle

| Part No. | Material* | Width In | Width mm | Package Quantity | Package Weight Lbs | Package Weight Kg |
|----------|-----------------|----------|----------|------------------|--------------------|-------------------|
| C72099 | 301 SS 1/4 Hard | 1/4 | 6.4 | 50/box | 0.3 | 0.1 |
| C72299 | 301 SS 1/4 Hard | 3/8 | 9.6 | 50/box | 0.5 | 0.2 |
| C72499 | 301 SS 1/4 Hard | 1/2 | 12.7 | 25/box | 0.5 | 0.2 |
| C72599 | 201 SS | 5/8 | 15.9 | 25/box | 0.8 | 0.4 |
| C72699 | 201 SS | 3/4 | 19.1 | 25/box | 0.9 | 0.4 |

*BAND-IT reserves the right to substitute material with equal or better corrosion resistance and/or mechanical specifications.



C00369 BAND-IT® Heavy Duty Tool

For product information see page 13.



C00169 BAND-IT® Tool

For product information see page 13.



316 Stainless Steel Band



316 Coated Stainless Steel Band



316 Stainless Steel Clip



316 Stainless Steel Ear-Lokt Buckle



Stainless Steel Scru-Lokt Buckle



See page 3.

317L Band

| Part No. | Material* | Width | | Thickness | | Average Breaking Strength (lbs) | Package Quantity | Package Weight | | Application Tools |
|----------|------------------|-------|------|-----------|------|---------------------------------|------------------|----------------|------|---------------------------------------|
| | | In | mm | In | mm | | | Lbs | Kg | |
| C41399 | 317L 1/4 Hard SS | 3/8 | 9.6 | 0.030 | 0.76 | 1290 | 300/roll | 11.9 | 5.3 | C00169 C00369 C40099 J02069† |
| C42499 | 317L 1/4 Hard SS | 1/2 | 12.7 | 0.020 | 0.51 | 1160 | 300/roll | 10.2 | 4.6 | |
| C41499 | 317L 1/4 Hard SS | 1/2 | 12.7 | 0.030 | 0.76 | 1725 | 300/roll | 15.9 | 7.2 | |
| C41599 | 317L 1/4 Hard SS | 5/8 | 15.9 | 0.030 | 0.76 | 2150 | 300/roll | 19.9 | 9.0 | |
| C41699 | 317L 1/4 Hard SS | 3/4 | 19.1 | 0.030 | 0.76 | 2580 | 300/roll | 23.9 | 10.8 | |

These products available in Mill coil.

† The J02069 tool can be used with 3/8" maximum width product.

Monel® 400 Band

| Part No. | Material* | Width | | Thickness | | Average Breaking Strength (lbs) | Package Quantity | Package Weight | | Application Tools |
|----------|------------|-------|------|-----------|------|---------------------------------|------------------|----------------|-----|---------------------------------------|
| | | In | mm | In | mm | | | Lbs | Kg | |
| C80399 | Monel® 400 | 3/8 | 9.6 | 0.025 | 0.64 | 630 | 100/roll | 3.7 | 1.7 | C00169 C00369 C40099 J02069† |
| C80499 | Monel® 400 | 1/2 | 12.7 | 0.030 | 0.76 | 1050 | 100/roll | 5.1 | 2.4 | |
| C80599 | Monel® 400 | 5/8 | 15.9 | 0.030 | 0.76 | 1310 | 100/roll | 7.7 | 3.5 | |
| C80699 | Monel® 400 | 3/4 | 19.1 | 0.030 | 0.76 | 1595 | 100/roll | 7.7 | 3.6 | |

† The J02069 tool can be used with 3/8" maximum width product.

Monel® 400 Buckle

| Part No. | Material* | Width | | Package Quantity | Package Weight | |
|----------|------------|-------|------|------------------|----------------|-----|
| | | In | mm | | Lbs | Kg |
| C85399 | Monel® 400 | 3/8 | 9.6 | 100/box | 0.8 | 0.4 |
| C85499 | Monel® 400 | 1/2 | 12.7 | 100/box | 2.1 | 1.0 |
| C85599 | Monel® 400 | 5/8 | 15.9 | 100/box | 2.4 | 1.0 |
| C85699 | Monel® 400 | 3/4 | 19.1 | 100/box | 3.7 | 1.7 |

All Purpose Band

| Part No. | Material* | Width | | Thickness | | Diameter of Hole | | Package Quantity | Package Weight | |
|----------|-------------------|-------|------|-----------|-------|------------------|----|------------------|----------------|-----|
| | | In | mm | In | mm | In | mm | | Lbs | Kg |
| AE4759 | 316 SS (coated) | 1/2 | 12.7 | 0.050** | 1.3** | 3/16 | 5 | 82.5/roll | 3.1 | 1.4 |
| AE4769 | 316 SS (coated) | 3/4 | 19.1 | 0.050** | 1.3** | 9/32 | 7 | 82.5/roll | 5.3 | 2.4 |
| AE4779 | 316 SS (coated) | 1 | 25.4 | 0.050** | 1.3** | 5/16 | 8 | 82.5/roll | 7.3 | 3.3 |
| AE4259 | 316 SS (uncoated) | 1/2 | 12.7 | 0.030 | 0.76 | 3/16 | 5 | 82.5/roll | 3.1 | 1.4 |
| AE4269 | 316 SS (uncoated) | 3/4 | 19.1 | 0.030 | 0.76 | 9/32 | 7 | 82.5/roll | 4.6 | 2.1 |
| AE4279 | 316 SS (uncoated) | 1 | 25.4 | 0.030 | 0.76 | 5/16 | 8 | 82.5/roll | 5.5 | 2.5 |

**Material thickness includes PPA 551 coating - Base material thickness is 0.030".

Q-Band™

The Q-Band/Q-Clip plastic clamping system is ideal for hundreds of light-duty fastening applications. Material Specification: polypropylene, U.V. Resistant, non-toxic, temperature range -30°F to +220°F (-34°C to +104°C). UL Rated.

| Part No. | Material* | Width | | Thickness | Package Quantity | Package Weight | | Application Tools |
|----------|---------------|-------|------|-----------|------------------|----------------|-----|-------------------|
| | | In | mm | | | Lbs | Kg | |
| Q70499 | White Plastic | 1/2 | 12.7 | 0.030 | 100/roll | 0.8 | 0.3 | Q72099 |

Q-Clip™

| Part No. | Material* | Width | | Package Quantity | Package Weight | |
|----------|---------------|-------|------|------------------|----------------|-----|
| | | In | mm | | Lbs | Kg |
| Q71499 | White Plastic | 1/2 | 12.7 | 25/box | 0.2 | 0.1 |

Pipe Patches

Metal backed patches lined with SBR compound function in a temperature range from -50° to +225°F. Not recommended for use on toxic and caustic gas and liquid lines.

| Part No. | Size | | Form | Package Quantity | Package Weight | |
|----------|--|----------|--------|------------------|----------------|-----|
| | Inches | mm | | | Lbs | Kg |
| D05089 | 1 x 1 | 25 x 25 | Flat | 30/box | 0.3 | 0.1 |
| D05199 | 2 x 2 1/2 | 50 x 63 | Curved | 10/box | 0.9 | 0.4 |
| D05299 | 3 x 3 1/2 | 76 x 88 | Curved | 10/box | 1.9 | 0.9 |
| D05499 | 3 1/2 x 4 | 88 x 101 | Curved | 10/box | 2.5 | 1.1 |
| D05599 | 3 1/2 x 6 | 88 x 152 | Curved | 5/box | 1.9 | 0.9 |
| D05699 | 3 1/2 x 8 | 88 x 203 | Curved | 5/box | 2.6 | 1.2 |
| D05799 | 3 1/2 x 10 | 88 x 254 | Curved | 5/box | 3.4 | 1.6 |
| D05399 | Pipe Patch Kit Contains: 1-D05089, 1-D05199, 1-D05299 | | n/a | Kit | 3.4 | 1.6 |

*BAND-IT reserves the right to substitute material with equal or better corrosion resistance and/or mechanical specifications.



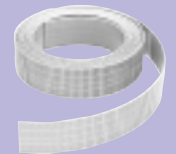
Monel® 400 Band



Monel® 400 Ear-Lokt Buckle



All Purpose Band



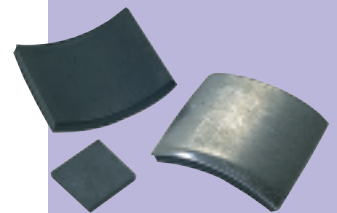
Q70499 Q-Band™



Q71499 Q-Clip™



Q72099 Q-Tool



Pipe Patches



Kits

BAND-IT® Warehouse Kit C27599

- Portable rugged container, 16" x 8 1/2" x 9 3/4" (Weight: 51.5 lbs, 23.4 Kg).
- Kit includes: 1 each - C00169, close quarter tension nut, C20299, C20399, C20499, C20599, C20699, C25299, C25399, C25499, C25599, C25699, C72099, C72499, C72699.



C27599 BAND-IT®
Warehouse Kit

BAND-IT® Band and Buckle Kit C27699 and C27799

- Basic starter kit in a polyethylene case.
- Two versions available.
- C27699, 1/2" band and buckle kit includes: 1 - C00169, 1 - C20499, 1 - C25499, 1 - C72499 (Weight: 17.2 lbs, 7.8 Kg).
- C27799, 3/4" band and buckle kit includes: 1 - C00169, 1 - C20699, 1 - C25699, 1 - C72699 (Weight: 21.6 lbs, 9.8 Kg).



C27699 BAND-IT®
Band and Buckle Kit

Pok-It Pak Kit J10099

- Polyethylene carrying case.
- Kit includes: 1 - J02069 Pok-It II tool, 1 - C20299, 1 - C20399, 1 - C25299, 1 - C25399, 1 - C72099, 1 - C72299, 80 - Junior® Smooth ID clamps (20 - 3/8" W x 13/16" dia, 20 - 3/8" W x 1 3/8" dia, 20 - 1/4" W x 3/4" dia, 20 - 3/8" W x 1 3/8" dia), 10 - BAND-FAST™ 1/4" W x 16" L, 10 - BAND-FAST™ 1/4" W x 34" L.



J10099 Pok-It Pak Kit

ID Kit ID3009

An assortment of blank ID tags to use with the ID Tagging System. Also, includes various Tie-Lok® ties and Tie-Lok® tool for tag fastening.

- Package Weight: 22.7 Lbs (10.3 Kg)
- Kit Includes: 1-A92079, 2-ID1029, 1-ID1019, 1-ID1009, 1-AS2119, 2-AS2129, 1-AS2139.

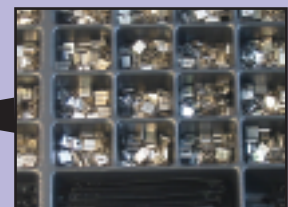


ID Kit ID3009

EASY READ Kit AE0609

An assortment of characters, carriers, and strips in a convenient carry case.

- Weight: 5.60 Lbs (2.54 Kg).
- Kit Includes: Carrying case, 50 of each character, carriers and strips.



EASY READ Kit AE0609



See page 3.