



Band Clamping Systems

**Universal Hose and Pipe Clamps
Made in Germany**



Bandimex Befestigungssysteme GmbH was founded in 1982 and has developed into an internationally active company. Our products have opened a wide range of applications and are used worldwide in many different branches of industry.



With our fastening technologies, we provide universal and economical solutions in numerous applications, such as hose clamping, sign fastening etc.

The careful choice of materials, their processing on the most modern machines and critical test procedures guarantee the high quality standards of our products.

A well assorted stock of raw materials and finished products as well as a highly motivated team of qualified staff form the basis for the quick and reliable supplying of our customers.



Bandimex Befestigungssysteme GmbH	2	Alu-Profile-Bracket	11
Contents	3	Preformed Clamps	12
Tool	4	Tool	13
Band	4	Adapter	13
Buckles	5	HD-Adapter	13
Scru-Buckles	5	Air Tool	13
JUMBO-Tool	6	Hose Menders	14
JUMBO-Band	6	Swivel Adapter Unions	14
JUMBO-Buckles	6	Hose Nipples	14
L-Band	7	High Pressure Couplings	15
L-Clips	7	Swaged Hose Couplings	15
L-Band Plus	8	Endless Worm Drive Bands and Housings	16
Plastic Dispenser	8	Worm Drive Seal	16
Pre-assembled Clamps	8	Worm Drive Clamps	17
Seals	8	Bolt Clamps	18
Warehouse	9	Pipe Patches	18
Ratchet Tool	9	Nipple Pushers	19
HD-Tool	9	Baby-Tool	20
Band Cutter	9	Baby-Band	20
Pocket-Tool	9	Baby-Band Plus	20
Mounting Brackets	10	Baby-Tags	20
Y-Brackets	10	Applications	21
Dimple-Bracket	11	Instructions Band and Buckle	22
Alu-Angles	11	Instructions Preformed Clamps	23



Using the **Bandimex Tool**, a roll of **Bandimex Band** and **Bandimex Buckles**, a clamp fitting each diameter and each shape can easily and quickly be applied at low cost, to clamp all types of hoses, fix signs and boards to poles, pipe mounting, and many other fastening applications.



Bandimex Tool

Tensioning capability over 1,0 t

Cat.No.		kg
W 001	Bandimex Tool	2,00

Replacement Parts

Cat.No.		kg
W 043	Close Quarter Tension Nut	0,06
W 006	Handle and Tension Screw	0,57
W 012	Cutter Bar	0,05
W 016	Ball Bearing	0,03

All replacement parts for the **Bandimex Tool W 001** are separately available.



Bandimex Band full round edge, SS-CrNi

30 m/roll

Cat.No.	width	thickness	kg
B 202	6,4 mm – ¼"	0,50 mm - .020"	0,8
B 203	9,5 mm – ⅜"	0,64 mm - .025"	1,5
B 204	12,7 mm – ½"	0,75 mm - .030"	2,3
B 205	16,0 mm – ⅝"	0,75 mm - .030"	2,9
B 206	19,0 mm – ¾"	0,75 mm - .030"	3,4

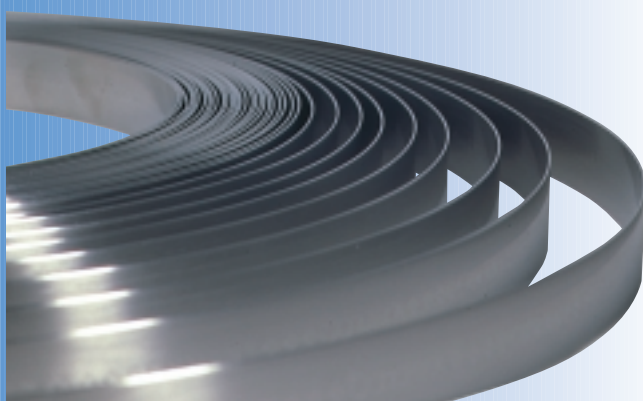
On request also available in mill coil lengths.

Bandimex Band full round edge, SS-CrNiMo

30 m/roll

Cat.No.	width	thickness	kg
B 402	6,4 mm – ¼"	0,50 mm - .020"	0,8
B 403	9,5 mm – ⅜"	0,64 mm - .025"	1,5
B 404	12,7 mm – ½"	0,75 mm - .030"	2,3
B 405	16,0 mm – ⅝"	0,75 mm - .030"	2,9
B 406	19,0 mm – ¾"	0,75 mm - .030"	3,4

On request also available in mill coil lengths.



Bandimex Buckles for single or double wrapped Bandimex Band, SS-CrNi

100 pcs./box

Cat.No.	for band width	kg
S 252	6,4 mm – $\frac{1}{4}$ "	0,1
S 253	9,5 mm – $\frac{3}{8}$ "	0,4
S 254	12,7 mm – $\frac{1}{2}$ "	1,0
S 255	16,0 mm – $\frac{5}{8}$ "	1,1
S 256	19,0 mm – $\frac{3}{4}$ "	1,7

Bandimex Buckles for single or double wrapped Bandimex Band, SS-CrNiMo

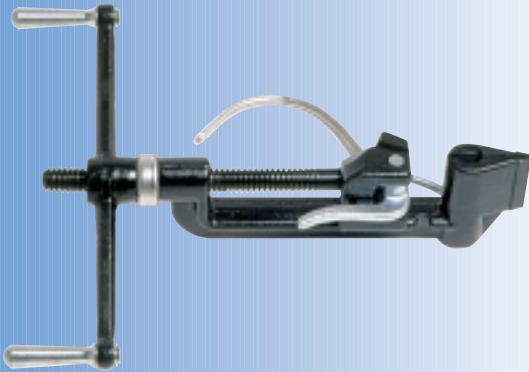
100 pcs./box

Cat.No.	for band width	kg
S 452	6,4 mm – $\frac{1}{4}$ "	0,1
S 453	9,5 mm – $\frac{3}{8}$ "	0,4
S 454	12,7 mm – $\frac{1}{2}$ "	1,0
S 455	16,0 mm – $\frac{5}{8}$ "	1,1
S 456	19,0 mm – $\frac{3}{4}$ "	1,7

Bandimex Scru-Buckles for retensioning clamps, SS-CrNi

Cat.No.	for band width	pcs./box	kg
S 722	9,5 mm – $\frac{3}{8}$ "	50	0,2
S 724	12,7 mm – $\frac{1}{2}$ "	25	0,2
S 726	19,0 mm – $\frac{3}{4}$ "	25	0,4



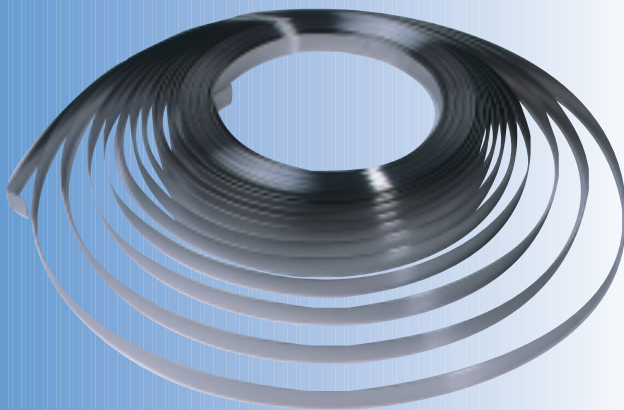


Bandimex JUMBO-Tool

Tensioning capability over 2,5 t

The Bandimex JUMBO-Tool is used to apply Bandimex JUMBO-Band and Bandimex JUMBO-Buckles.

Cat.No.		kg
W 402	Bandimex JUMBO-Tool	5,0



Bandimex JUMBO-Band for heavy-duty clamping applications, full round edge, SS-CrNi

30 m/roll

Cat.No.	width	thickness	kg
B 430	19,0 mm – 3/4"	1,2 mm - .047"	5,5
B 431	25,0 mm – 1"	1,0 mm - .040"	6,0
B 432	32,0 mm – 1 1/4"	1,0 mm - .040"	7,7

On request also available in mill coil lengths.



Bandimex JUMBO-Buckles for single or double wrapped Bandimex JUMBO-Band, SS-CrNi

25 pcs./box

Cat.No.	for band width	kg
S 440	19,0 mm – 3/4"	0,8
S 441	25,0 mm – 1"	1,1
S 442	32,0 mm – 1 1/4"	1,4

Bandimex L-Band
for light-duty clamping applications,
full round edge, SS-CrNi
thickness: 0,4 mm - .016"

30 m/roll

Cat.No.	width	kg
B 133	9,5 mm – $\frac{3}{8}$ "	0,9
B 134	12,7 mm – $\frac{1}{2}$ "	1,2
B 135	16,0 mm – $\frac{5}{8}$ "	1,5
B 136	19,0 mm – $\frac{3}{4}$ "	1,8

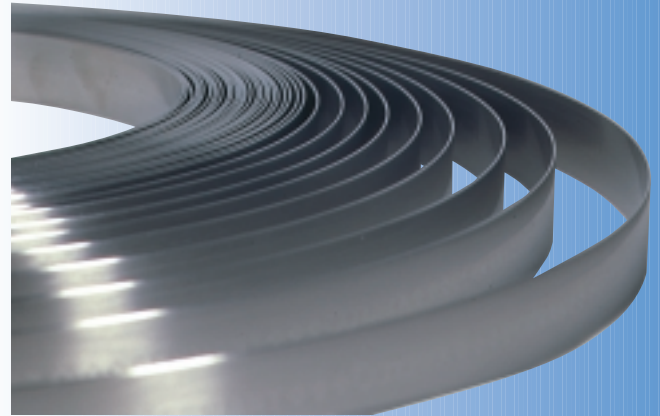
50 m/roll

Cat.No.	width	kg
B 127	9,5 mm – $\frac{3}{8}$ "	1,5
B 128	12,7 mm – $\frac{1}{2}$ "	2,0
B 129	16,0 mm – $\frac{5}{8}$ "	2,5
B 130	19,0 mm – $\frac{3}{4}$ "	3,0

90 m/roll

Cat.No.	width	kg
B 123	9,5 mm – $\frac{3}{8}$ "	2,7
B 124	12,7 mm – $\frac{1}{2}$ "	3,7
B 125	16,0 mm – $\frac{5}{8}$ "	4,6
B 126	19,0 mm – $\frac{3}{4}$ "	5,5

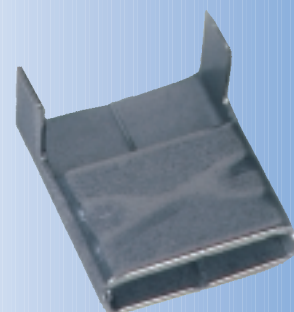
On request also available in mill coil lengths.

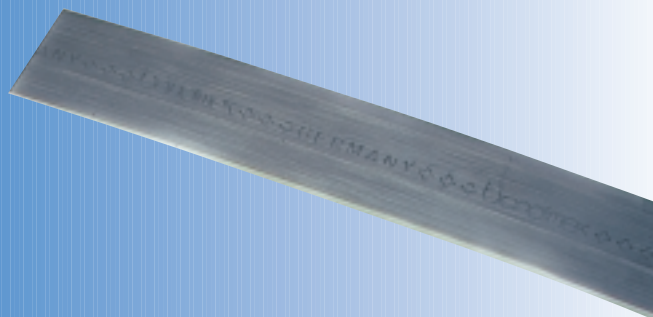


Bandimex L – Clips
for use with Bandimex L-Band and
Bandimex L-Band Plus, SS-CrNi
100 pcs./box

Cat.No.	for band width	kg
S 153	9,5 mm – $\frac{3}{8}$ "	0,3
S 154	12,7 mm – $\frac{1}{2}$ "	0,4
S 155	16,0 mm – $\frac{5}{8}$ "	0,5
S 156	19,0 mm – $\frac{3}{4}$ "	0,9
S 176 *	19,0 mm – $\frac{3}{4}$ "	1,1

* reinforced for extra strength





Bandimex L-Band Plus
full round edge, SS-CrNi
thickness: 0,5 mm - .020"
30 m/roll

Cat.No.	width	kg
B 181	12,7 mm - 1/2"	1,5
B 161	19,0 mm - 3/4"	2,3

50 m/roll

Cat.No.	width	kg
B 183	12,7 mm - 1/2"	2,5
B 163	19,0 mm - 3/4"	3,9

On request also available in mill coil lengths.

On request **Bandimex L-Band**, **Bandimex L-Band Plus** and **Bandimex L-Clips** are also available in other material grades.



Plastic Dispenser

Bandimex Band, **Bandimex L-Band** and **Bandimex L-Band Plus** are also available in waterproof plastic packaging with carrying handle.



Bandimex Pre-assembled Clamps

Available in **SS-CrNi** and **SS-CrNiMo**.

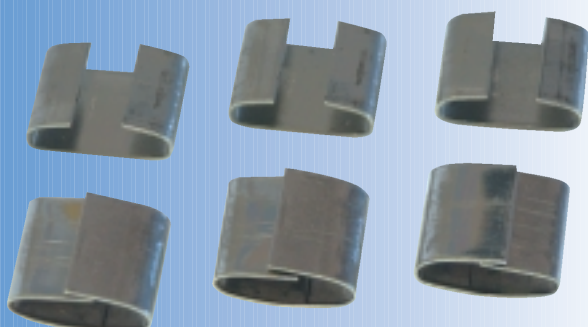
On request we supply bands of any required length, with or without **Bandimex Buckles**, **Bandimex Scru-Buckles** or **Bandimex L-Clips** securely mounted on the band.

Bandimex Seals

Available in **SS-CrNi** and **SS-CrNiMo**.

U-form and overlapping.

For band width 3/8", 1/2", 5/8" and 3/4".



Warehouse, Ratchet Tool, HD-Tool, Band Cutter and Pocket-Tool

Bandimex Warehouse

Cat.No.		kg
W 274	Bandimex Warehouse (Empty) 410 x 210 x 250 mm	4,4
V 125	Bandimex Plastic Case (Empty) 530 x 140 x 400 mm	1,6

Bandimex Ratchet Tool

The Bandimex Ratchet Tool is used to apply Bandimex Band, Bandimex L-Band and Bandimex L-Band Plus.

Cat.No.		kg
VC 400	Bandimex Ratchet Tool	1,6

Bandimex HD-Tool

For clamping applications with Bandimex Band requiring extra strength.

Cat.No.		kg
W 001HD	Bandimex HD-Tool	2,3

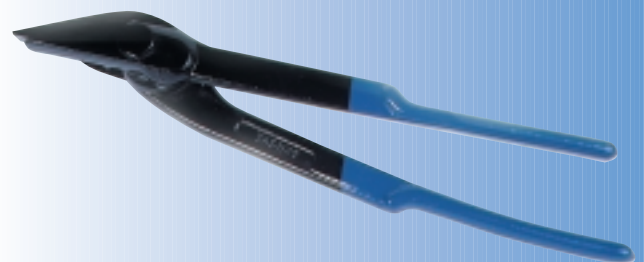
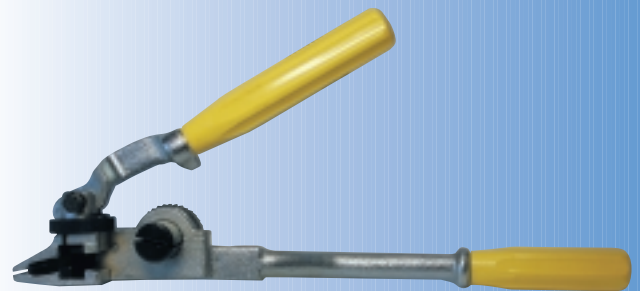
Bandimex Band Cutter

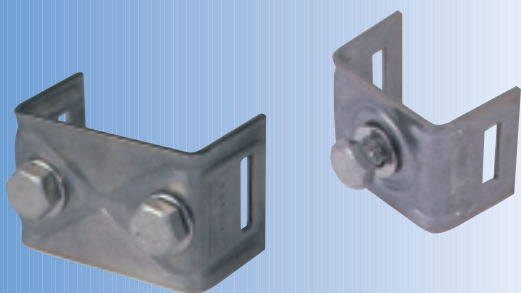
Cat.No.		kg
SS 120	Bandimex Band Cutter	0,9

Bandimex Pocket-Tool

Cat.No.		kg
W 101	Bandimex Pocket-Tool	0,5

The Bandimex Pocket-Tool is used to apply Bandimex Band, Bandimex L-Band, Bandimex L-Band Plus and Bandimex Preformed Clamps with band width $\frac{1}{4}$ " and $\frac{3}{8}$ ".

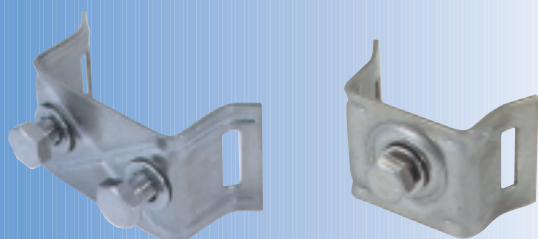




Bandimex Mounting Brackets with straight legs SS-CrNi

50 pcs./box

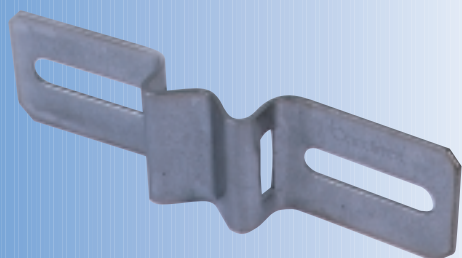
Cat.No.		kg
H 001	1 bolt (M8 x 16) with washer	3,3
H 008	2 bolts (M8 x 16) with washers	4,4



Bandimex Mounting Brackets with flared legs SS-CrNi

50 pcs./box

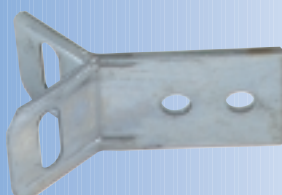
Cat.No.		kg
H 021	1 bolt (M8 x 16) with washer	3,3
H 028	2 bolts (M8 x 16) with washers	4,4



Bandimex Mounting Brackets with 9 mm wide slotted holes SS-CrNi

50 pcs./box

Cat.No.		kg
H 026	90 mm long, 50 mm – 80 mm	2,6
H 025	140 mm long, 60 mm – 120 mm	4,0
H 027	200 mm long, 115 mm – 175 mm	6,3



Bandimex Y-Bracket SS-CrNi

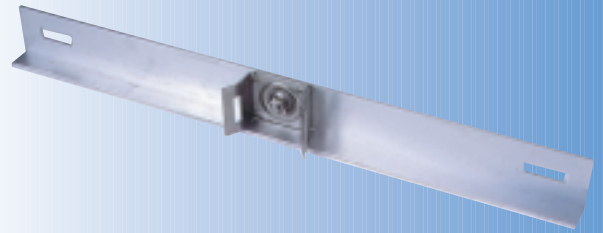
50 pcs./box

Cat.No.		kg
H 096	Y – Bracket 60 mm long	4,2
H 097	Y – Bracket 100 mm long	6,0

Dimple-Bracket, Alu-Angles and Alu-Profile-Bracket

Bandimex Dimple-Bracket flared legs SS-CrNi 50 pcs./box

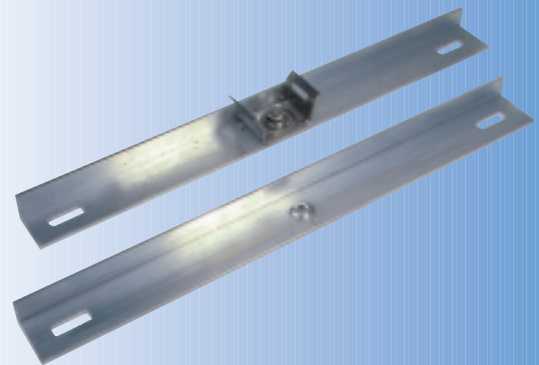
Cat.No.		kg
H 435	1 bolt, with dimple hole for Alu-Angles H 100 bis H 930	3,5



Bandimex Alu-Angles Specially suited for outrigger signs, supports and strengthens signs over total width. 1 pc./box

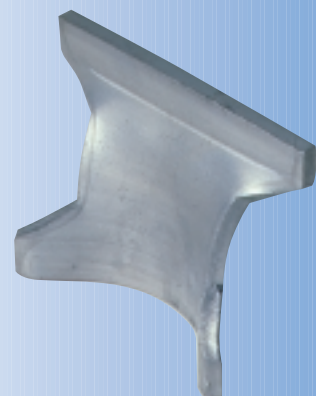
Cat.No.		kg
H 100	slotted holes 60 mm – 90 mm	0,04
H 380	slotted holes 335 mm – 365 mm	0,18
H 530	slotted holes 480 mm – 510 mm	0,24
H 730	slotted holes 685 mm – 715 mm	0,34
H 930	slotted holes 885 mm – 915 mm	0,43

Bandimex Alu-Angles are used with the **Bandimex Dimple-Bracket H 435**.



Bandimex Alu-Profile-Bracket for signs and boards with alu-profile-frame. 1 pc./box

Cat.No.		kg
H 002	Alu-Profile-Bracket	0,05

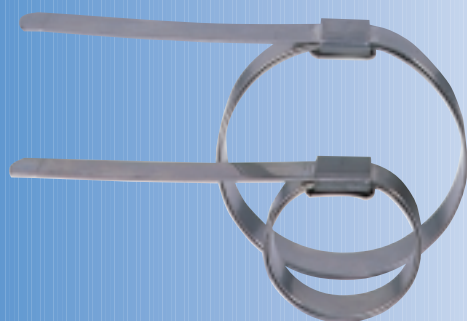
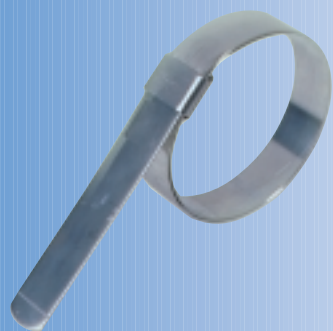
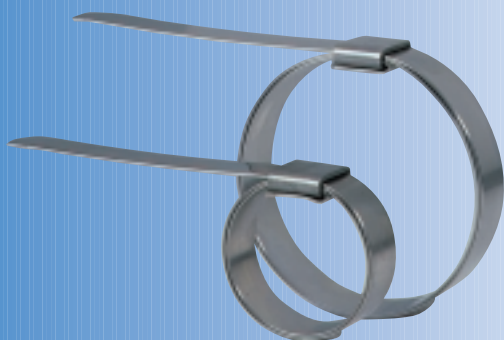


Bandimex Preformed Clamps are quickly and easily applied with the **Bandimex Tool W 001** and the **Bandimex Adapter V 001 or V 050**. For high volume clamping the **Bandimex Air Tool V 440** is recommended.

Available in SS-CrNi, SS-CrNiMo and galvanized carbon steel.

19 diameters in 5 width.

On request other sizes are available.



width 6,4 mm (1/4 ") x thickness 0,50 mm (.020")

Cat.No. SS-CrNi	Cat.No. SS-CrNiMo	Cat.No. galvanized	I.D.	pcs./box	kg
V 240			19 mm - 3/4"	100	0,9
V 242	V 442		25 mm - 1"	100	1,0
V 241	V 441		35 mm - 1 3/8"	100	1,1
V 252			38 mm - 1 1/2"	100	1,2
V 253	V 453		51 mm - 2"	100	1,5
V 256	V 456		70 mm - 2 3/4"	100	1,7
V 244	V 444		76 mm - 3"	100	1,9
V257			89 mm - 3 1/2"	100	2,1

width 9,5 mm (3/8") x thickness 0,64 mm (.025")

Cat.No. SS-CrNi	Cat.No. SS-CrNiMo	Cat.No. galvanized	I.D.	pcs./box	kg
V 201	V 401	V 301	21 mm - 13/16"	100	1,6
V 243		V 343	25 mm - 1"	100	1,8
V 202	V 402	V 302	35 mm - 1 3/8"	100	2,1
V 265			38 mm - 1 1/2"	100	2,2
V 245		V 345	48 mm - 1 7/8"	100	2,5
V 246	V 446	V 346	76 mm - 3"	100	3,4
V 248	V 448		102 mm - 4"	100	4,1

width 12,7 mm (1/2") x thickness 0,75 mm (.030")

Cat.No. SS-CrNi	Cat.No. SS-CrNiMo	Cat.No. galvanized	I.D.	pcs./box	kg
V 203	V 403	V 303	25 mm - 1"	100	3,0
V 204	V 404	V 304	32 mm - 1 1/4"	100	3,3
V 232			38 mm - 1 1/2"	100	3,7
V 236		V 336	45 mm - 1 3/4"	100	4,0
V 237		V 337	51 mm - 2"	100	4,3
V 230		V 330	70 mm - 2 3/4"	100	5,1
V 249			102 mm - 4"	100	6,8

width 16,0 mm (5/8") x thickness 0,75 mm (.030")

Cat.No. SS-CrNi	Cat.No. SS-CrNiMo	Cat.No. galvanized	I.D.	pcs./box	kg
V 205	V 405	V 305	38 mm - 1 1/2"	100	4,7
V 206	V 406	V 306	45 mm - 1 3/4"	100	5,1
V 207	V 407	V 307	51 mm - 2"	100	5,5
V 208	V 408	V 308	57 mm - 2 1/4"	100	6,0
V 209	V 409	V 309	64 mm - 2 1/2"	100	6,3

width 19,0 mm (3/4") x thickness 0,75 mm (.030")

Cat.No. SS-CrNi	Cat.No. SS-CrNiMo	Cat.No. galvanized	I.D.	pcs./box	kg
V 227		V 327	51 mm - 2"	100	6,8
V 210	V 410	V 310	70 mm - 2 3/4"	50	4,2
V 211	V 411	V 311	76 mm - 3"	50	4,4
V 212	V 412	V 312	89 mm - 3 1/2"	50	4,9
V 213	V 413	V 313	102 mm - 4"	25	2,8
V 214	V 414	V 314	114 mm - 4 1/2"	25	3,0
V 215	V 415	V 315	127 mm - 5"	25	3,3
V 216	V 416	V 316	152 mm - 6"	25	3,7
V 218	V 418		180 mm - 7"	25	4,7

Tool, Adapter, HD-Adapter and Air Tool

Bandimex Tool

Tensioning capability over 1,0 t

Cat.No.	kg
W 001 Bandimex Tool	2,00

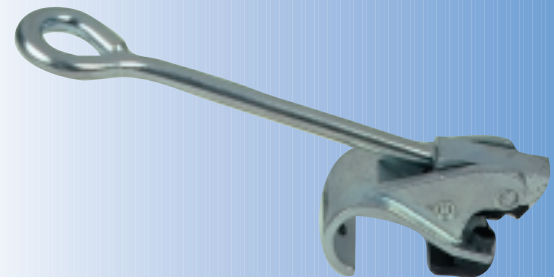


Bandimex Adapter

to apply Bandimex Preformed Clamps.

For use with the **Bandimex Tool W 001** fixed in a vise.

Cat.No.	kg
V 001 Bandimex Adapter	0,7



Bandimex HD-Adapter

to apply Bandimex Preformed Clamps.

For use with the **Bandimex Tool W 001** fixed in a vise as well as for portable applications.

Cat.No.	kg
V 050 Bandimex HD-Adapter	0,7



Cat.No.

kg

V 015	Cutter Blade Kit for Bandimex Adapter V 001 and V 050	0,1
-------	---	-----

Bandimex Air Tool

for high volume production clamping
of Bandimex Preformed Clamps.

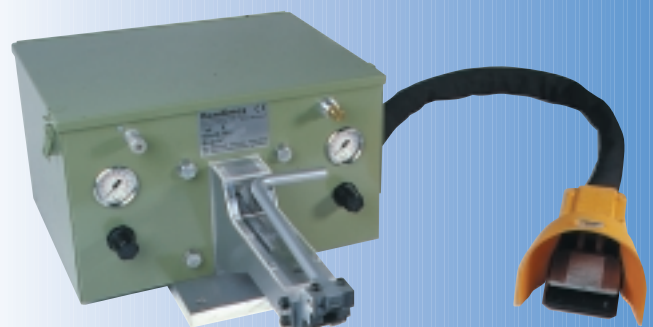
Cat.No.	kg
V 440 Bandimex Air Tool	28,5

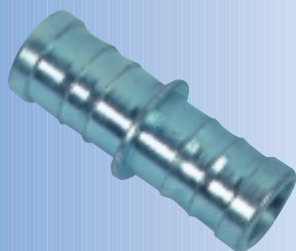
The **Bandimex Air Tool V 440** is an air controlled tool for applying **Bandimex Preformed Clamps**. Operated by pedal – both hands are free to manipulate the object to be clamped.

An ideal, proven tool to clamp hose, cables and ropes of various constructions. Each clamp is pulled down with exactly the same preset pressure in seconds.

Cat.No.	kg
V 920 Cutter Blade Kit for Bandimex Air Tool V 440	0,1

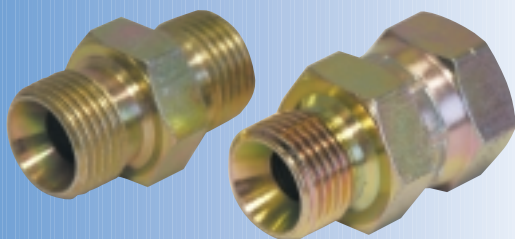
All replacement parts for the **Bandimex Air Tool V 440** are separately available.





Bandimex Hose Menders Plated Steel 1 pc./box

Cat.No.	Hose I.D.	total length	kg
K 106	6 mm – ¼"	46 mm	0,01
K 108	10 mm – ⅜"	48 mm	0,02
K 110	13 mm – ½"	60 mm	0,03
K 112	16 mm – ⅝"	60 mm	0,04
K 114	20 mm – ¾"	60 mm	0,05
K 116	25 mm – 1"	80 mm	0,07
K 118	32 mm – 1¼"	80 mm	0,14
K 120	38 mm – 1½"	80 mm	0,18



Bandimex Swivel Adapter Unions Plated Steel

On request available in various sizes and types.



Bandimex Hose Nipples Plated Steel Male Thread 12 pcs./box

Cat.No.	BSP thread	Hose I.D.	kg
K 056	¼ "	6 mm - ¼ "	0,34
K 060	¼ "	10 mm - ⅜ "	0,34
K 062	⅜ "	10 mm - ⅜ "	0,51
K 068	¼ "	13 mm - ½ "	0,62
K 070	⅜ "	13 mm - ½ "	0,57
K 072	½ "	13 mm - ½ "	0,94
K 082	½ "	20 mm - ¾ "	1,36
K 084	¾ "	20 mm - ¾ "	1,31
K 090	1 "	25 mm - 1 "	1,99
K 092	1 "	32 mm - 1¼ "	3,29
K 096	1½ "	38 mm - 1½ "	5,22

Bandimex High Pressure Couplings with Yoke Plated Steel Male Thread 12 pcs./box

Cat.No.	BSP thread	Hose I.D.	kg
K172	½ "	13 mm - ½ "	1,39
K184	¾ "	20 mm - ¾ "	2,27
K190	1 "	25 mm - 1 "	3,46

Bandimex High Pressure Couplings with Yoke Plated Steel Female Thread 12 pcs./box

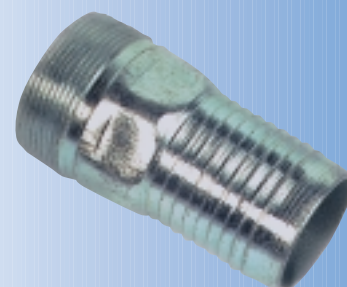
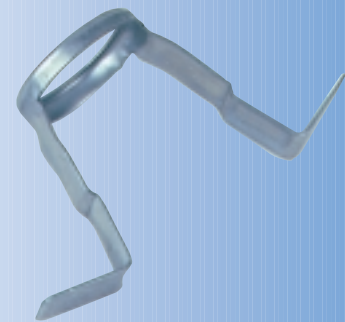
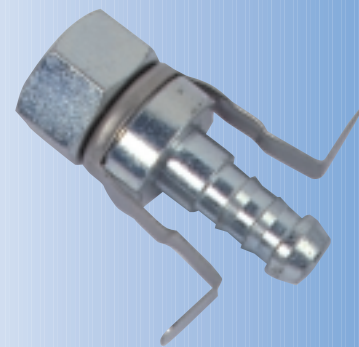
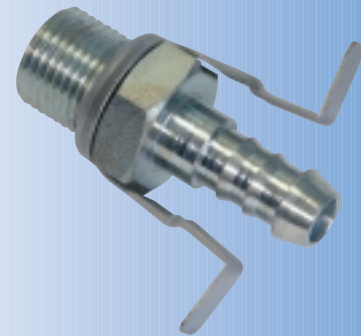
Cat.No.	BSP thread	Hose I.D.	kg
K 266	½ "	13 mm - ½ "	1,50
K 274	¾ "	20 mm - ¾ "	2,73
K 283	1 "	25 mm - 1 "	4,09

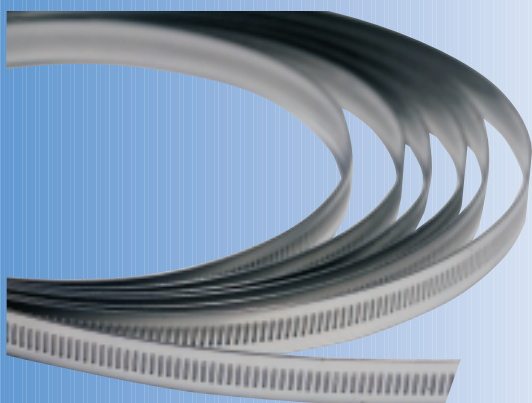
Replacement Yokes for Bandimex High Pressure Couplings SS-CrNi 12 pcs./box

Cat.No.	Hose I.D.	kg
K 022	13 mm - ½ "	0,17
K 034	20 mm - ¾ "	0,23
K 040	25 mm - 1 "	0,31

Bandimex Swaged Hose Couplings Plated Steel BSP Thread 1 pc./box

Cat.No.	Hose I.D.	total length	kg
K 798	13 mm - ½ "	93 mm	0,06
K 800	20 mm - ¾ "	93 mm	0,09
K 802	25 mm - 1 "	100 mm	0,16
K 804	32 mm - 1 ¼ "	105 mm	0,21
K 806	38 mm - 1 ½ "	108 mm	0,31
K 808	50 mm - 2 "	134 mm	0,48
K 812	63 mm - 2 ½ "	146 mm	0,90
K 814	75 mm - 3 "	156 mm	1,50
K 816	100 mm - 4 "	203 mm	2,30
K 818	125 mm - 5 "	285 mm	4,00
K 820	150 mm - 6 "	350 mm	6,00

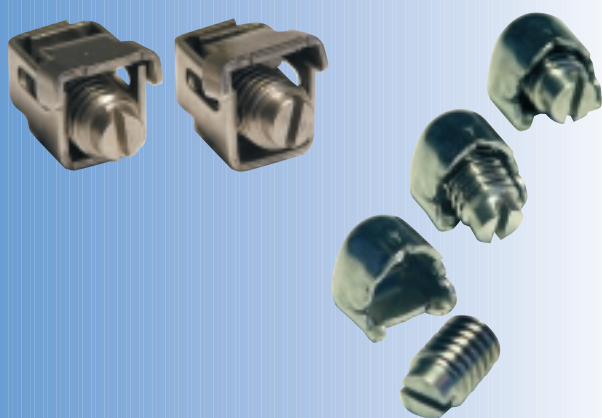




A very versatile and highly adaptable clamp, most suitable for larger diameters.
Ideal for installation work in air conditioning systems, insulation, clamping filter cloths, bundling cables etc.

Band width 7 mm, SS-CrNi

Cat.No.		kg
A 207	Band, 25 m / roll	0,76
A 207/2	Band, 2 m / roll	0,06
A 217	Housing, fast locking, 100 pcs.	0,90



Band width 11 mm, SS-CrNi or galvanized

Cat.No. SS-CrNi	Cat.No. galvanized		kg
A 230	A 330	Band, 30 m / roll	2,00
A 230/3	A 330/3	Band, 3 m / roll	0,20
A 260	A 360	Housing, fast locking, 100 pcs.	2,10
A 270	A 370	Housing, lose screw, 100 pcs.	1,23



Band width 14 mm, SS-CrNi

Cat.No.		kg
A 213	Band, 30 m / roll	1,74
A 213/5	Band, 5 m / roll	0,29
A 210	Housing, fast locking, 10 pcs.	0,08
A 211	Housing, fast locking, 50 pcs.	0,39

On request we supply endless worm drive bands of any required length, with or without housing securely mounted on the band.

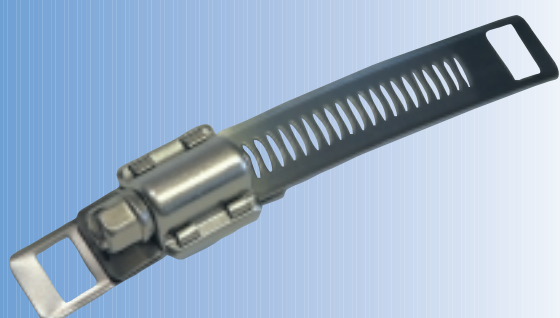
Bandimex Worm Drive Seal

SS-CrNi

For use with 3/8" Bandimex Band or
Bandimex L-Band.

10 pcs./box

Cat.No.		kg
A 220	Bandimex Worm Drive Seal	0,3



Worm Drive Clamps

SS-CrNi

Heavy Duty construction.

Band width 14 mm – thickness 0,6 mm.

10 pcs./box

Cat.No.	Range		kg
	in mm	in inch	
A 008	12 - 22	$\frac{7}{16} - \frac{7}{8}$	0,21
A 010	16 - 27	$\frac{5}{8} - 1\frac{1}{16}$	0,22
A 012	20 - 32	$\frac{3}{4} - 1\frac{1}{4}$	0,24
A 020	25 - 40	1 - 1 $\frac{1}{2}$	0,26
A 024	30 - 45	1 $\frac{3}{16}$ - 1 $\frac{3}{4}$	0,27
A 028	35 - 50	1 $\frac{3}{8}$ - 2	0,28
A 032	40 - 60	1 $\frac{1}{2}$ - 2 $\frac{3}{8}$	0,30
A 036	50 - 70	2 - 2 $\frac{3}{4}$	0,32
A 044	60 - 80	2 $\frac{3}{8}$ - 3 $\frac{1}{4}$	0,34
A 052	70 - 90	2 $\frac{3}{4}$ - 3 $\frac{1}{2}$	0,36
A 056	80 - 100	3 $\frac{1}{4}$ - 4	0,39
A 064	90 - 110	3 $\frac{1}{2}$ - 4 $\frac{3}{8}$	0,41
A 072	100 - 120	4 - 4 $\frac{3}{4}$	0,43
A 080	110 - 130	4 $\frac{3}{8}$ - 5 $\frac{1}{4}$	0,45
A 084	120 - 140	4 $\frac{3}{4}$ - 5 $\frac{1}{2}$	0,47
A 088	130 - 150	5 $\frac{1}{4}$ - 6	0,49
A 094	140 - 160	5 $\frac{1}{2}$ - 6 $\frac{3}{8}$	0,51
A 104	150 - 170	6 - 6 $\frac{3}{4}$	0,53
A 110	160 - 180	6 $\frac{3}{8}$ - 7 $\frac{1}{4}$	0,56
A 116	170 - 190	6 $\frac{3}{4}$ - 7 $\frac{1}{2}$	0,58
A 122	180 - 200	7 $\frac{1}{4}$ - 8	0,60
A 140	190 - 210	7 $\frac{1}{2}$ - 8 $\frac{3}{8}$	0,62
A 152	200 - 220	8 - 8 $\frac{3}{4}$	0,64
A 158	210 - 230	8 $\frac{3}{8}$ - 9 $\frac{1}{4}$	0,66
A 164	220 - 240	8 $\frac{3}{4}$ - 9 $\frac{1}{2}$	0,68
A 172	230 - 250	9 $\frac{1}{4}$ - 10	0,71

Further dimensions are available on request.

Worm Drive Clamps are also available in light-duty constructions with band width **9 mm** (starting with diameter 8 mm) and **12 mm** (starting with diameter 16 mm).

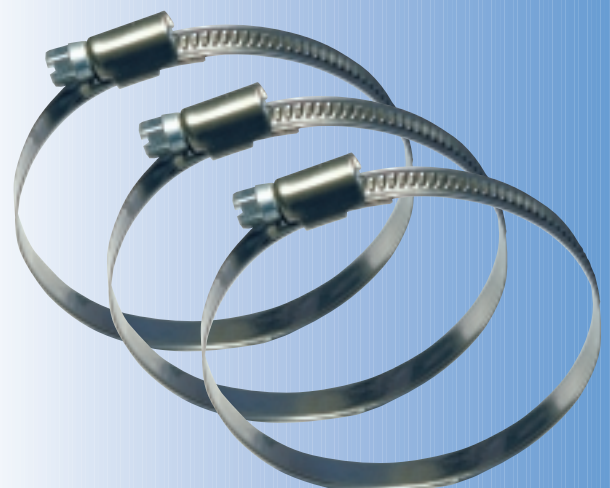
Available in following material types:

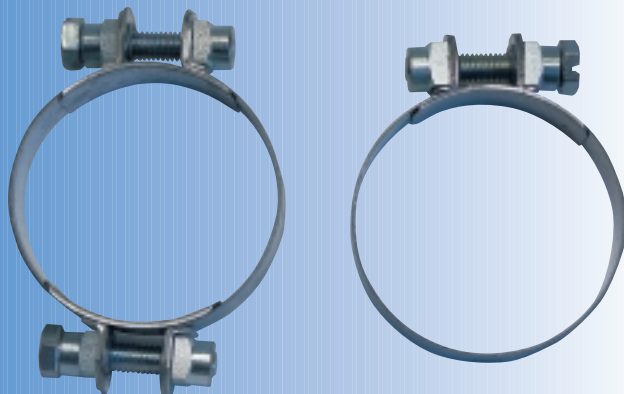
W1: All parts galvanized

W2: Band and housing in SS 430, screw galvanized

W4: All parts SS-CrNi

W5: All parts SS-CrNiMo





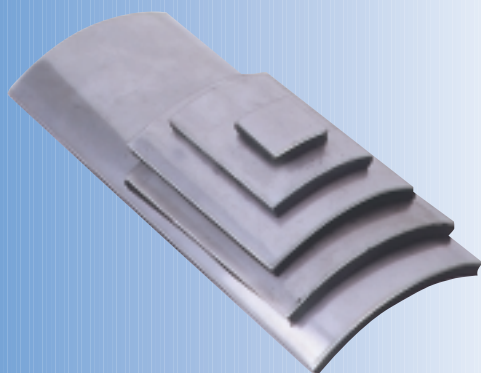
Bolt Clamps

Bolt Clamps are available with band width
9 mm, 12 mm, 15 mm, 20 mm and 25 mm.

Material types:

1. Galvanized Steel
2. SS-CrNi
3. SS-CrNiMo

Band width	smallest diameter	
9 mm	9 mm	1-bolt
12 mm	12 mm	1-bolt
15 mm	20 mm	1-bolt
20 mm	25 mm	1 bolt and 2 bolts
25 mm	50 mm	1 bolt and 2 bolts



Bandimex Pipe Patches

Install the Bandimex Pipe Patch with 3/4" **Bandimex Band** and **Bandimex Scru-Buckles**.

Cat.No.	Dimensions	pcs./box	kg
R 050	30 x 30 mm	30	0,1
R 051	50 x 65 mm	10	0,4
R 052	75 x 90 mm	10	0,9
R 054	90 x 100 mm	10	1,1
R 055	90 x 150 mm	5	0,9
R 056	90 x 200 mm	5	1,2
R 057	90 x 250 mm	5	1,6
R 053	Pipe Patch Set contains 1 box each R 050, R 051 and R 052		1,4

On request other dimensions are available.

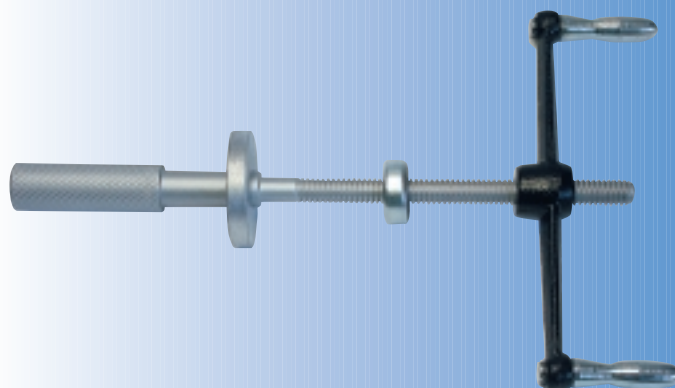
Nipple Pushers

Bandimex Nipple Pushers

1 pc./box

Cat.No.		Hose I.D.	Mandrel O.D.	kg
W 020	Handle			0,38
W 016	Ball Bearing			0,03
T 050	Sleeve			0,09
T 053	Pusher Plate			0,07
T 033	Mandrel	6 mm – ¼ "	3,8 mm	0,10
T 034	Mandrel	10 mm – ⅜ "	5,3 mm	0,12
T 035	Mandrel	13 mm – ½ "	8,6 mm	0,19
T 036	Mandrel	16 mm – ⅝ "	12,2 mm	0,24
T 037	Mandrel	20 mm – ¾ "	14,0 mm	0,23
T 038	Mandrel	25 mm – 1 "	18,7 mm	0,34
T 039	Mandrel	32 mm – 1 ¼ "	23,6 mm	0,44
T 040	Mandrel	38 mm – 1 ½ "	29,2 mm	0,64

Assemble W 020, W 016 and T 050 for T 033, T 034, T 035, no Sleeve/Pusher Plate for T 036, T 037 and T 053 for T 038, T 039, T 040.

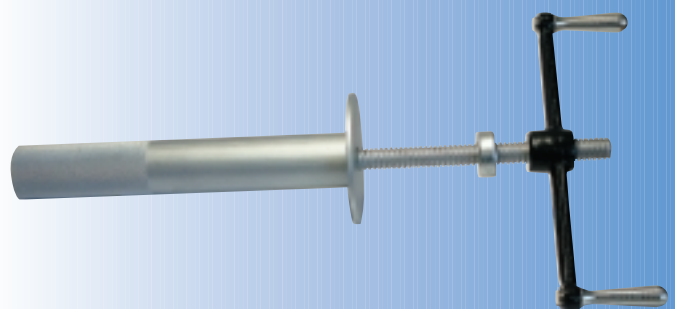


Bandimex Heavy Duty Nipple Pushers

1 pc./box

Cat.No.		Hose I.D.	Mandrel O.D.	kg
W 420	JUMBO-Handle			1,22
W 408	JUMBO-Ball Bearing			0,08
W 410	JUMBO-Tension Screw			0,41
T 055	Pusher Plate			0,06
T 095	Pusher Plate			0,30
T 099	Pusher Plate			0,81
T 502	Mandrel	50 mm – 2 "	39,7 mm	0,59
T 504	Mandrel	63 mm – 2 ½ "	48,3 mm	1,56
T 506	Mandrel	75 mm – 3 "	60,3 mm	2,18
T 510	Mandrel	100 mm – 4 "	88,9 mm	4,79
T 512	Mandrel	125 mm – 5 "	114,3 mm	5,26
T 514	Mandrel	150 mm – 6 "	138,1 mm	7,77

Assemble W 420, W 408, W 410 and T 055 for T 502, T 095 for T 504, T 506 and T 099 for T 510, T 512, T 514.



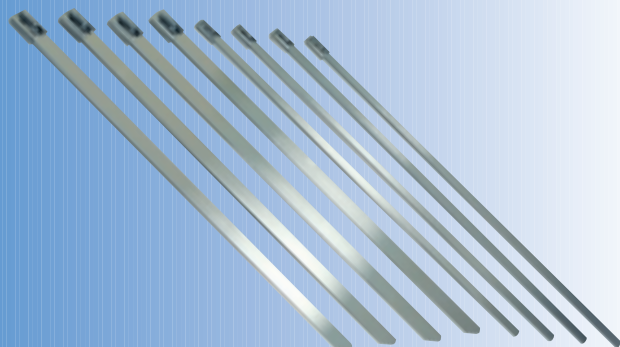


Baby-Tool

Cat.No.		kg
M 100	Baby-Tool	0,63

Baby-Band Round edges, SS-CrNiMo width 4,5 mm – .177" thickness 0,3 mm – .010" 100 pcs./box

Cat.No.	Length	max. Diameter	Kg
M 145	152 mm – 6"	25 mm – 1"	0,23
M 245	200 mm – 8"	50 mm – 2"	0,28
M 345	360 mm – 14"	102 mm – 4"	0,36
M 545	520 mm – 20"	152 mm – 6"	0,61
M 645	680 mm – 27"	203 mm – 8"	0,80
M 845	840 mm – 33"	254 mm – 10"	0,94
M 045	1050 mm – 41"	318 mm – 12 ½"	1,15



Baby-Band Plus Round edges, SS-CrNiMo width 8,0 mm – .315" thickness 0,3 mm – .010" 50 pcs./box

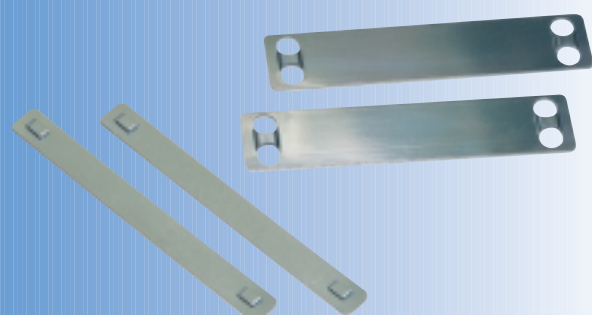
Cat.No.	Length	max. Diameter	Kg
M 180	152 mm – 6"	25 mm – 1"	0,23
M 280	200 mm – 8"	50 mm – 2"	0,27
M 380	360 mm – 14"	102 mm – 4"	0,43
M 580	520 mm – 20"	152 mm – 6"	0,58
M 680	680 mm – 27"	203 mm – 8"	0,73
M 880	840 mm – 33"	254 mm – 10"	0,88
M 080	1050 mm – 41"	318 mm – 12 ½"	1,11



Baby-Tags SS-CrNiMo 100 pcs./box

Cat.No.	Dimensions	kg
M 001	89 mm x 9,5 mm – 3½" x ¾"	0,17
M 002	89 mm x 19,0 mm – 3½" x ¾"	0,30

Only for use with **Baby-Band** (width 4,5 mm).



On request various tag imprinters are available.



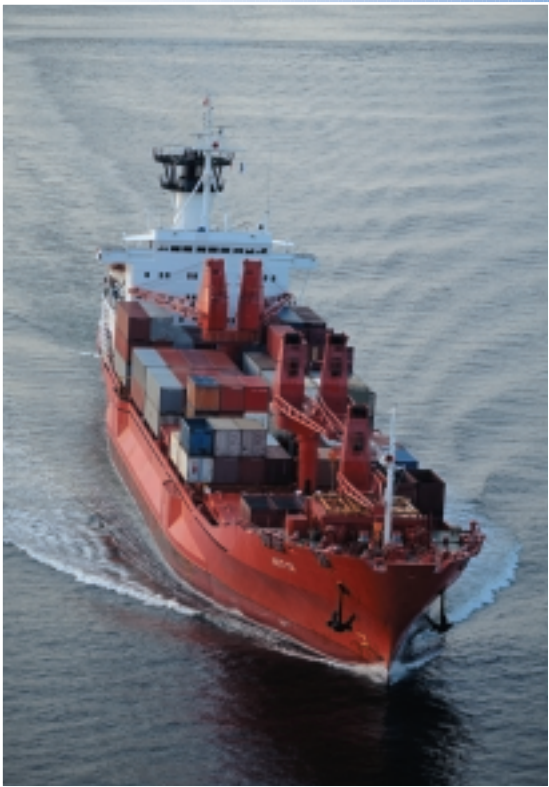
Utilities & Communication



Agriculture



Industrial



Shipping



Sign & Signal



Aviation



Pull buckle on band, ears pointing towards end of band. Form clamp, holding band on band, then push buckle back over the doubled band, bending the end approx. 1" under buckle.



For heavy duty jobs double wrap band.



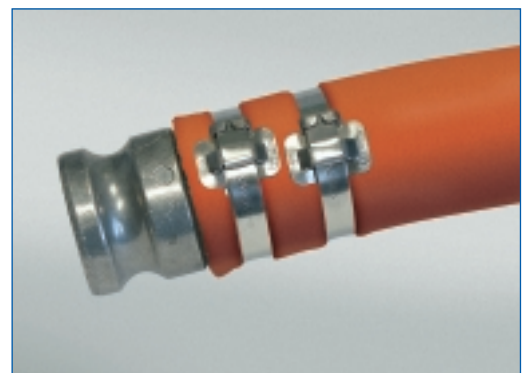
Place band in tool, push down on gripper with thumb, tension clamp by turning handle. Maximum tension is reached when band stops moving through buckle. When required tension has been applied, roll tool over buckle, at the same time reversing handle carefully approx. $\frac{1}{2}$ turn to avoid breakage. There is no loss of tension, if handle is not reversed too much.



Pull on cutter lever, band is cut off to correct length.



Hold stub of band with thumb, hammer it flat over bridge of buckle, complete clamp by hammering ears over stub.



Instructions Preformed Clamps

Apply with the **Bandimex Tool W001** and **Bandimex Adapter V001 (a) or V050 (b)**.

Place Bandimex Tool in vise, put Bandimex Adapter on nose of tool. Slip Preformed Clamp in tool and grip tail end with excenter lever.

Insert hose into clamp and apply tension. To control tensioning, hold thumb on that side of buckle where band enters. When band stops moving through buckle, maximum tension has been applied.

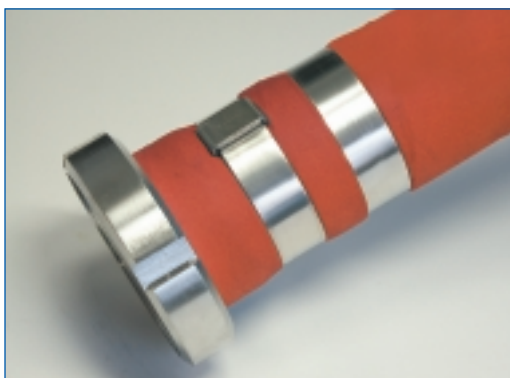
Roll hose over until shear hook engages behind buckle edge, at the same time reversing handle by $\frac{1}{4}$ to $\frac{1}{2}$ turn (depending on type and size of hose).

(a)

Pull on cutter lever to cut band.

(b)

Turn disc by hand until tight. Put ratchet wrench on hex nut and operate until band is sheared off.



◀ The finished Bandimex Preformed Clamp requires no hammering or crimping.





Bandimex Befestigungssysteme GmbH

Dortmunder Straße 7a

57234 Wilnsdorf

Germany

Phone +49 2739 8703-0

Fax +49 2739 8703-22

E-Mail info@bandimex.de

Internet www.bandimex.de